



MiSi 4.0

DIRECTORY OF MALAYSIAN SYSTEM INTEGRATORS

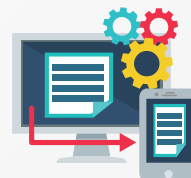
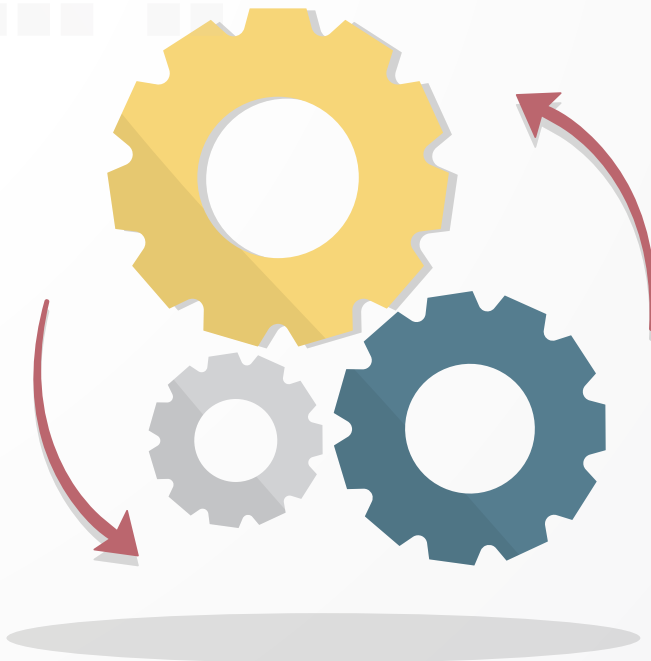


TABLE OF CONTENT

FOREWORD	2
List of System Integrators	5
• Advanced Binary Networks Sdn Bhd	6
• Bizsmart Technology Sdn Bhd	9
• Elliance Sdn Bhd	12
• Etronix Sdn Bhd	14
• HF Technology Sdn Bhd	16
• IIOTECH Sdn Bhd	18
• Teksoft (Sea) Sdn Bhd	21
• Maxtrax Engineering Sdn Bhd	23
• Mexcel Technologies Sdn Bhd	27
• NSCB Systems Sdn Bhd	30
• Orionplex Sdn Bhd	33
• Packaging Sales & Service (M) Sdn Bhd	37
• Robolab Technology Sdn Bhd	39
• SoftRock Technology Sdn Bhd	41
• Sophic Automation Sdn Bhd	44
• Supremesoft (M) Sdn Bhd	51
• Tofi Solution Sdn Bhd	53
• TXMR Sdn Bhd	54
• ViE Technologies Sdn Bhd	56
System Integrators Matrix	58
System Integrators Listing.....	60



FOREWORD

I bid my warmest recognitions to the Machinery and Equipment Productivity Nexus (MEPN) team and all System Integrators under MISI4.0 who are willing to collaborate with MPC in realising the publication of this directory.

System integration is becoming more important for industry 4.0 implementation. Due to the increasing advances in automation technology, and the associated need to simplify processes for easier management, an integrated system will streamline business processes, reduce costs and ensure efficiency. This inaugural directory is a good platform to bring together key players amongst local system integrators in the industry and act as promotion catalyst for industry players in searching for quality and reliable system integrators for total solutions and the related services.

I believe this initiative will give momentum to our push for increasing national productivity and businesses will use this platform to progress more competitively by moving towards technology advancement and adopting industry 4.0. Afterall, technological advancements are often driven by the need to improve efficiency and represent the cornerstone of successful productivity augmentation projects.

As the leading organisation in productivity enhancement for global competitiveness and innovation, MPC shall continue to provide facilitating ecosystem for business players, to all system Integrators, I wish you every success and hope you can secure bigger business opportunities through a wider range of promotion through this Directory of Malaysian System Integrators.

A stylized handwritten signature in black ink, consisting of a large 'A' and a 'P' connected together.

Dato' Abdul Latif Bin Hj Abu Seman
Director General
Malaysia Productivity Corporation



FOREWORD

The establishment of Machinery and Equipment Productivity Nexus (MEPN) mandated under Malaysia Productivity Blueprint (MPB) has paved the way for significant industry-led initiatives. As champion of MEPN, I am proud to lend our support to MISI4.0 in coming up with this directory publication and always looking for options to improve the performance of M&E sector.

Emerging technologies can create new income streams to business and contribute to economic growth of the nation. No doubt, as business struggle to cross the chasm towards digital transformation, the evolving role of system integrators is the missing link to fill the gap. MEPN would continuously support such collaborative platform that MISI4.0 is advancing and unrelentingly aimed at enhancing the capability of M&E Industries as well as improving efficiency leading to improved productivity.

Congratulations to the organising team from their hard work and continued support and I wish all of you great success.

I strongly believe that this publication would provide a platform for the industry players to foster closer networking and collaboration in finding the best solutions for their business and building a meaningful business relationship that can be turned into profitable ventures in the future.

A handwritten signature in black ink, appearing to read 'Mac Ngan Boon', with a stylized flourish at the end.

Mac Ngan Boon

Champion

Machinery and Equipment Productivity Nexus (MEPN)



FOREWORD

I am delighted and honoured to write this foreword, as Chairman of Malaysia Industrial 4.0 System Integrator Association (MISI4.0), I would like to congratulate Malaysia Productivity Corporation (MPC) for taking effort to bridge up the gap in the Industry 4.0 eco-system in Malaysia. This is the first Directory of Malaysia System Integrators for Industry 4.0 implementation.

Prime Minister of Malaysia, Tun Dr. Mahathir Mohamad has launched the National Policy on Industry 4.0, known as Industry4WRD at MITI Tower on October 31st, 2018. Industry4WRD is Malaysia's response to call for digital transformation of the manufacturing sector and its related services by facilitating companies to embrace Industry 4.0 in a systematic and comprehensive manner, and be smarter and stronger by people, process and technology. Malaysia Industrial 4.0 System Integrator Association (MISI4.0) is committed to support MPC through Productivity Nexus aligned with MITI direction, where Industry4WRD aims to pave the way for enhanced productivity, job creation and high-skilled talent pool in the manufacturing sector, and ultimately contribute to the economic prosperity and societal wellbeing.

Furthermore, it would encourage development of innovative capacity and capability of manufacturing sector and related services to create Malaysia's own technologies, products and services.

With the implementation of Industry4WRD, the establishment of "Directory of Malaysia System Integrators" by MPC will help the local Malaysian SMEs to find the right partner for their Industry 4.0 implementation. MISI4.0 believes that the Industry will remain ahead and competitive in facing the challenges brought by the 4th Industrial Revolution. Agility to adapt to the inevitability of Industry 4.0 will drive forward Malaysia's industry and make Malaysia an attractive prospect for advanced-technology, innovative and high value-added industries in years ahead.

A stylized black ink signature of David Khor, consisting of several loops and a long horizontal stroke.

David Khor
Chairman

Malaysia Industrial 4.0 System Integrator (MISI4.0) Association
Persatuan Peneraju Integrasi Industri 4.0 Malaysia



LIST OF **SYSTEM INTEGRATORS**





Business Scope

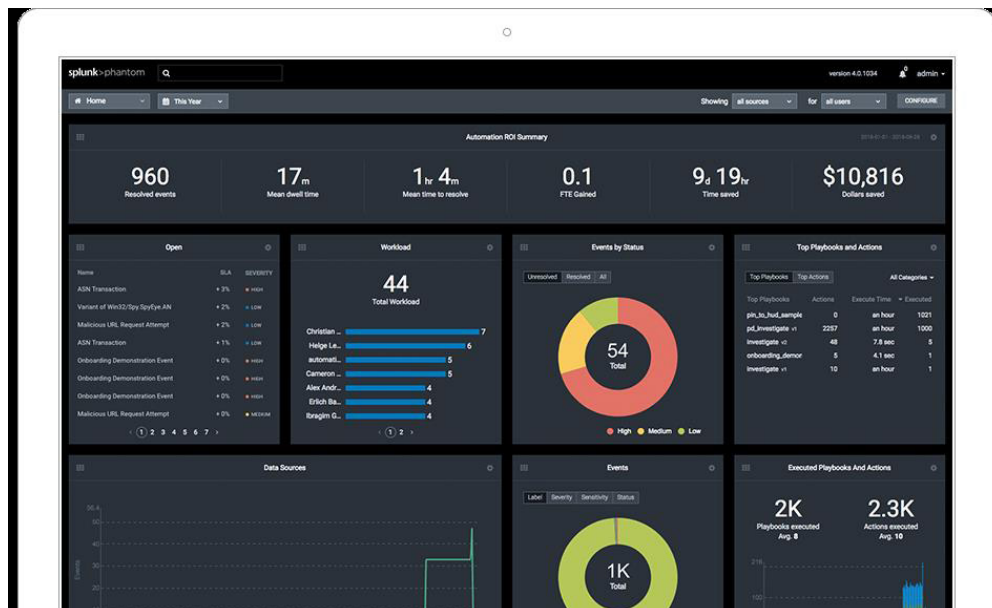
Our main service is to develop software and system based on your requirements. We will take your requirements of your business process and create the software that will automate your business process.

Advanced Binary Networks Sdn. Bhd. offers a comprehensive range of managed e-serviced, which includes providing internet applications and internet infrastructure services. Founded in 2012, Advanced Binary Networks Sdn. Bhd. deployed software throughout the world. We able to collaborate together & assist to automate your business process using information technology (IT) to help you gain more productivity and able to get things done faster.

Our Services and Products



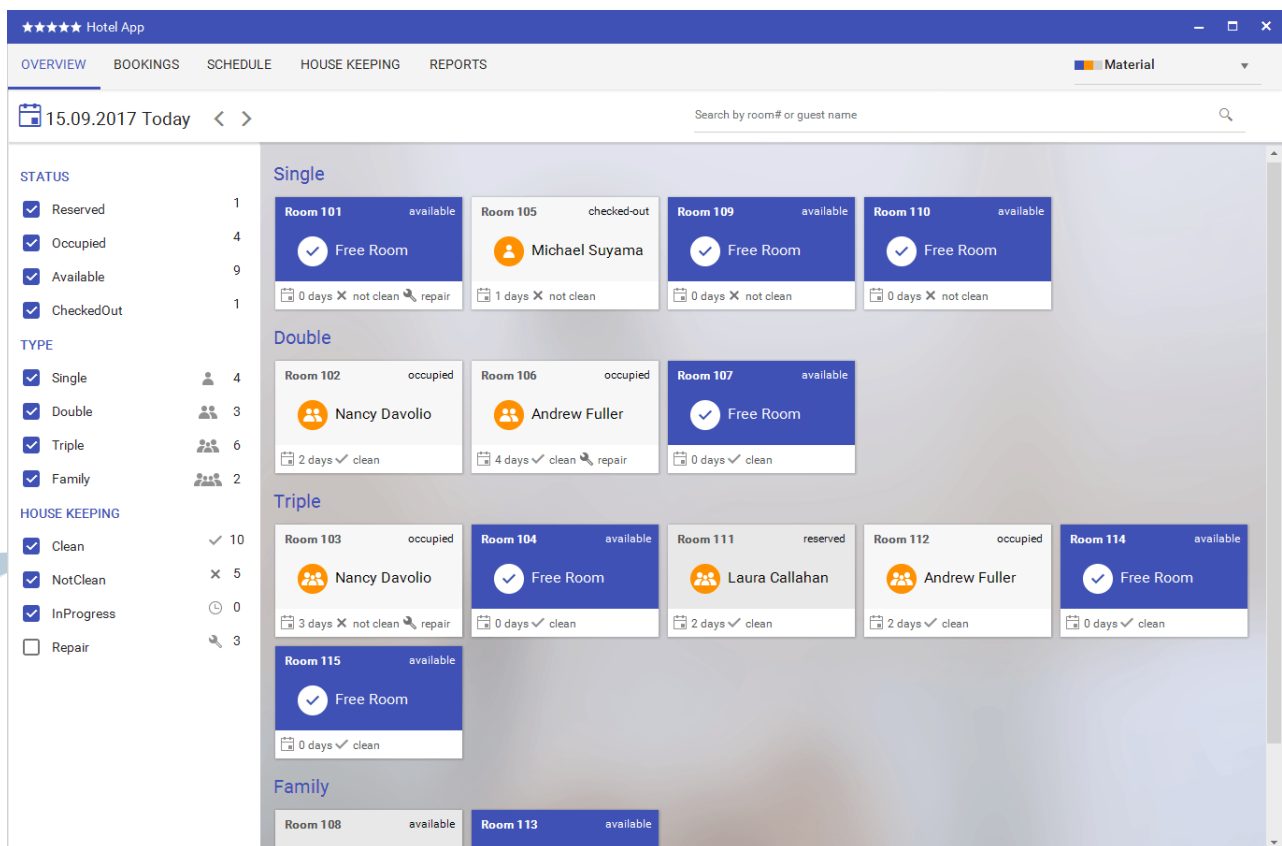
ONLINE BASED SYSTEM



BIG DATA VISUALIZATION, ANALYTICS AND REPORTING



MOBILE APPLICATION SYSTEM DEVELOPMENT



WINDOWS – DESKTOP APPLICATION



CUSTOMIZED SOFTWARE DEVELOPMENT BASED ON REQUIREMENT



**SMART IOT AND
ENGINEERING SOLUTIONS
PARTNER**

Introduction

Bizsmart Technology Sdn Bhd was formed in 2013 to meet the growing demand for high-quality yet cost-effective IT consulting services. In the Modern dynamic and speedy converting world, Bizsmart Technology focus on Industry 4.0. Technology based, focusing on Manufacturing Solutions for Production processes, hardware and systems.

Points toward intelligent, networked systems, production environments are combined to produce universal production worlds, which are partly of a physical nature, and partly attain a new functionality in the cyber space of web connectivity. The focal point in this development is the convergence of information and automation technology, for which we laid the foundation for Industry 4.0 concepts.

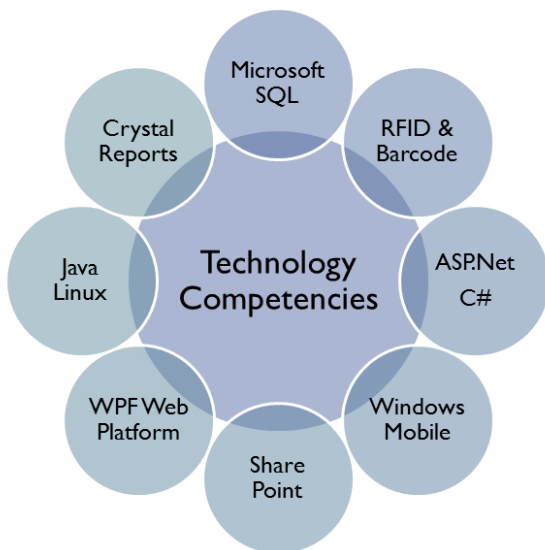
We provide IoT hardware design and development, custom software development, Smart Factory Dashboard, IT consulting services and process automation with trained professionals. Our team is comprised of seasoned, professional consultants to take your manufacturing towards Industry 4.0, Our mission cultivate professional relationships with our clients to provide effective and reliable information technology solutions for their needs.

"It doesn't matter whether industrial or IT companies take on the leading role. Only together can we develop the opportunities presented by Industry 4.0 in the best possible way. And to do this we need a strong network consisting of mechanical engineering, electrical engineering and IT."

Dr. Jochen Köckler, Member of the Managing Board at Deutsche Messe AG.

With the background rooted in process, we build on our legacy knowledge and grow it dynamically in the areas of Monitoring, Data Analysis, IoT hardware, Dashboards solutions and Process Automation. As part of his journey, we partnered with Microsoft so that our clients can benefit from these high-level technology too.

Core Expertise



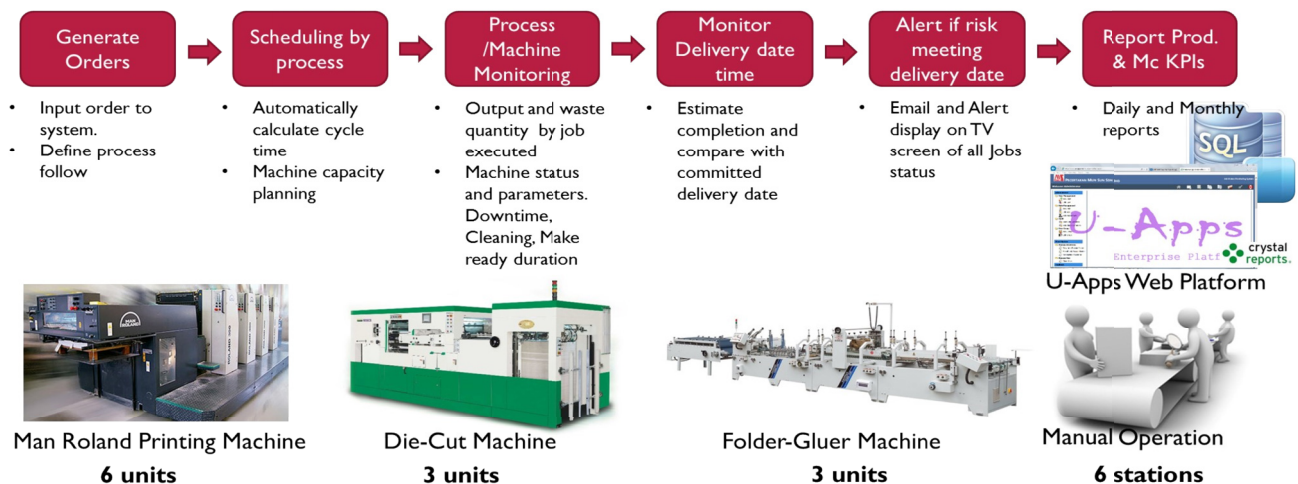
- Customize Enterprise Software Development
- Barcode and traceability System
- Industry Automation and Smart Manufacturing (IoT)
- IoT Sensoring for Smart Factory Dashboard
- IT Hardware and Software Installation
- Manufacturing AI and Dashboard

U-Apps is an universal application environment tool to create web base business intelligence portal to transform raw data into meaningful and useful information for business purposes

- ☐ Highly customizable web pages
- ☐ Dynamic Inquiry and Maintenance pages
- ☐ User friendly GUI
- ☐ Role based page permission
- ☐ Reporting pages
- ☐ Workflow pages
- ☐ Job Scheduler with auto results email
- ☐ Microsoft SQL database. Supports Express edition

U-Apps
Enterprise Platform

Job Order Monitoring



Man Roland Printing Machine
6 units



Die-Cut Machine
3 units

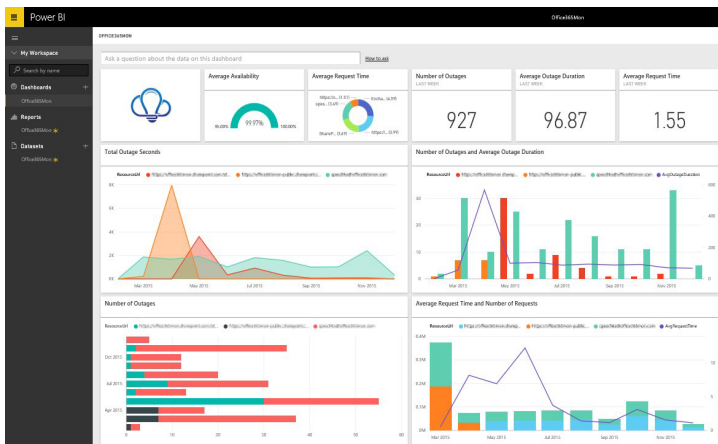


Folder-Gluer Machine
3 units



Manual Operation
6 stations

Manufacturing Dashboard, IoT sensors in production collects and analytic solutions analyze and presented on Dashboard for effective visualization of results and decision making. Our web dashboard are mobile friendly responsive design.



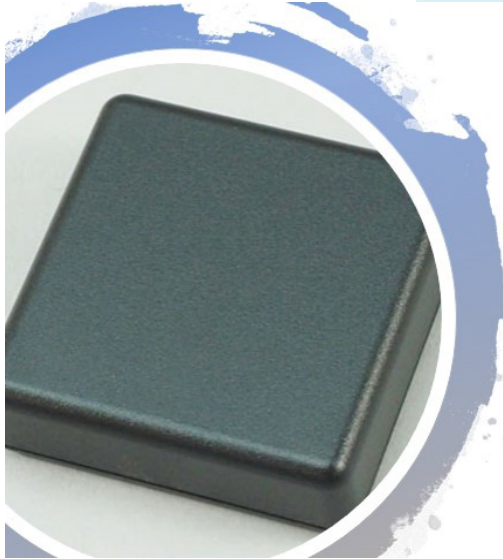
Production Solution using low cost Raspberry PI on Windows 10 IoT Core



You do not need a PC to run your production display we can do it with Raspberry PI.

IoTMatchBox

Our flagship product designed to collect factory and production data for analytic analysis. Its WIFI and Bluetooth ready comes with over 20 different module for various types of inputs. The solution complete with libraries, services and tutorial for client self manage customization and installation. We do provide a turnkey solutions with Dashboard and our U-Apps web platform.

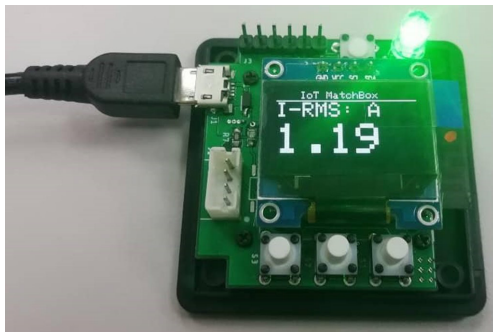


Some of most common are

- Power consumption monitoring
- Temperature and Humidity
- Air Quality
- Production Outputs
- Machine/Process Parameters
- Barcode/RFID
- Analog and Digital IO

If your IT team plans to take up the development, no worries, we can support with

- Sample codes and Libraries
- Web services
- Windows services
- Mobile Apps
- Dashboards





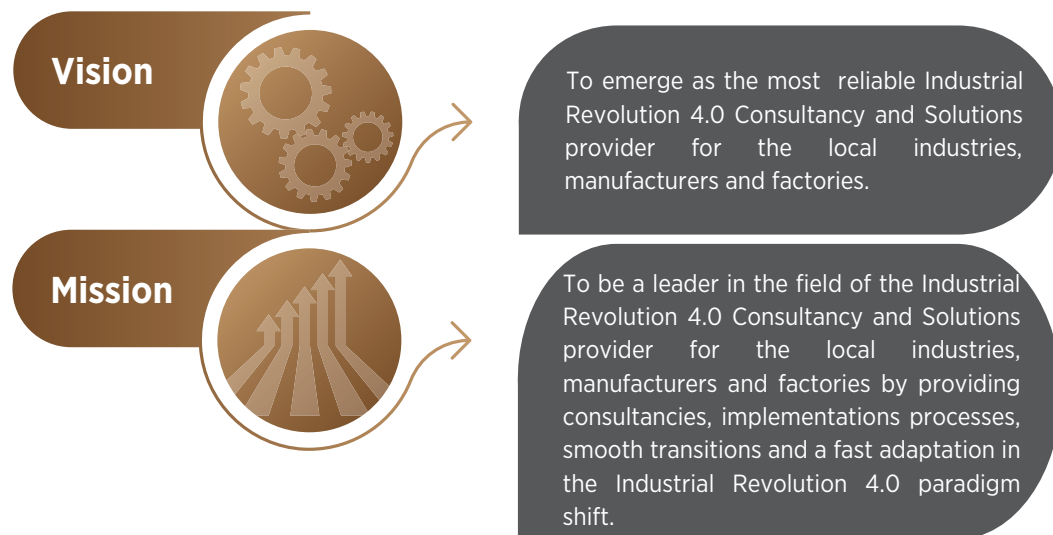
ELLIANCE SDN BHD

Introduction

Elliance Sdn Bhd established in 2011, is a fast-growing Malaysian based company specialising in the provision of industrial LAN/CLOUD based automation solutions. Having worked with systems such as SCADA, different PLCs and other software, Elliance Sdn Bhd seeks to lead the charge in helping factories and industrial plants upgrade their facilities.

Elliance Sdn Bhd, currently functioning as a system integrator, has gathered together a team of Industrial Revolution 4.0 consultants who are well-versed in various fields of manufacturing to provide expert help and advice at the different stages of implementation in the journey towards the setting up of smart factories (Industrial Revolution 4.0)

Besides offering help and advice, Elliance Sdn Bhd also seeks to offer solutions in the study of manufacturing processes, with the goal of assisting manufactures with the provision of hardware and software solutions in moving towards Industrial Revolution 4.0.



Our Services and Capabilities Consultancy

- The members of our consultant panel are all specialists of different fields and have been involved in IR 4.0 related works for many years, this enables us to provide the professional advice and recommendations for our clients at every stage of their IR 4.0 implementation.

Solutions and Sytem Installation

- We have a team of seasoned and experienced system integrators who are well trained and familiar with the 9 pillars of IR 4.0. They work under the guidance of our IR 4.0 consultant panel to install tools, software, hardware, equipment, and assoseries to help our clients attain the IR 4.0 standard.

Industry 4.0 [Vision and Journey]

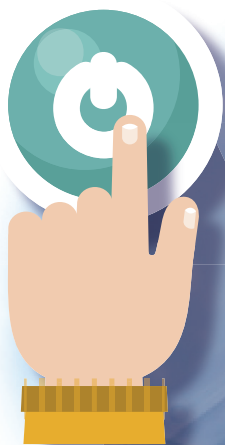


CONTINUITY AND SUSTAINABILITY



Let's Start The Industrial Revolution 4.0 Journey Together

- The adventure of the Industrial Revolution 4.0 journey is full of challenges uncertainties, but yet the rewards will be abundant and worth all the effort.
- Our commitment is to use all our expertise and experience to make this smooth without compromising the rich returns.
- Let's work together to make the Industrial Revolution 4.0 a reality in your plant /factory.





"Smart Solutions for Smart Factory"

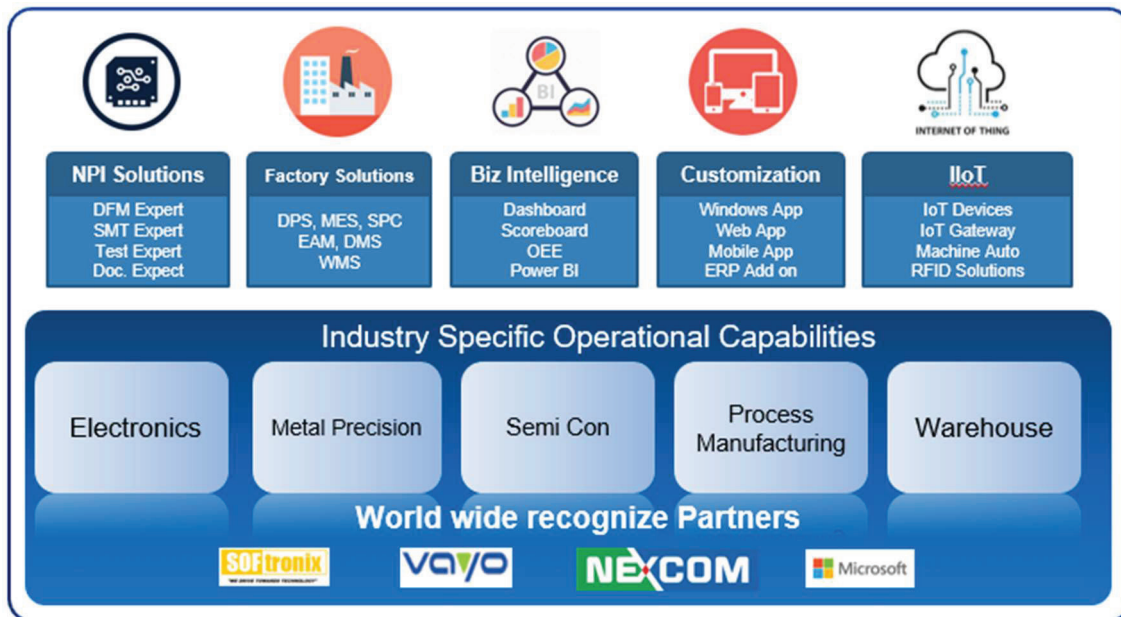
Introduction

ETRONIX aims to become an independent software provider offering smart manufacturing solutions that empowering manufacturers of complex, high tech discrete products to be more agile, productive and efficient. We work with **our products** and **Industry 4.0 technology partners** through collaboration to achieve value-added elements in the products for our customer. We help manufacturing companies to achieve the increase agility required to gain and maintain a competitive edge in the constantly changing business through our knowledge and experience.

Our People

Our people is our greatest asset! The individual founders of the company each have more than 18+ years of experience as software solution providers. With more than 40 years combined experiences in various industries such as Semiconductor, Electronic PCBA & Box Build, Automotive, Metal Precision and Wire Manufacturing, our state-of-the-art products and services enable our customers to drive cost down, flexibly meet market demands and achieve greater visibility, agility & productivity.

Our Core Expertise



Mission Statement

- Empower our customers with our smart manufacturing solutions to turn Industry 4.0 a reality
- Customer satisfaction is our main priority

Our Core Value

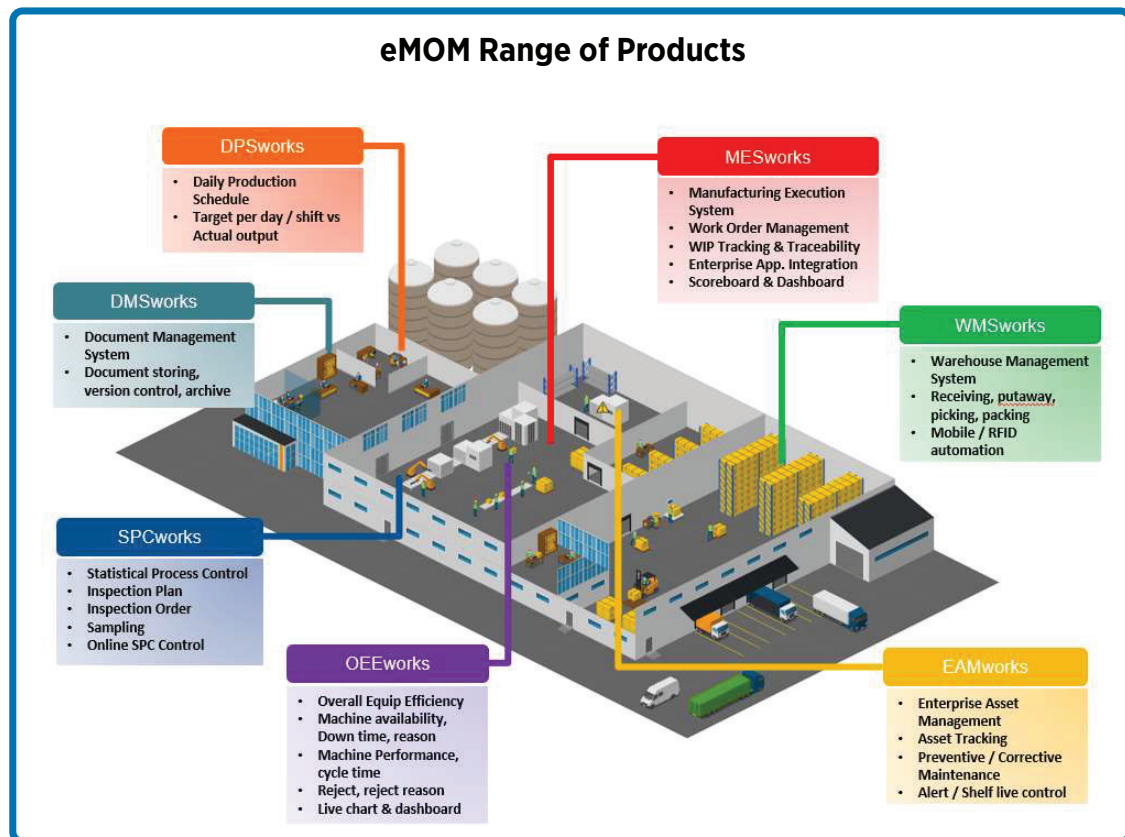
- We are aligned by our common purpose and work together as a complementary team
- We take ownership to achieve outstanding results and seek value at all times
- We develop our people to grow with us
- We understand our customers and deliver best value to them
- We always strive for continuous improvement

Company Slogan

Smart Solution for Smart Factory

Our Products

Etronix Manufacturing Operation Management (eMOM) product range are build on modern framework and technologies. eMOM is comprehensive, modular and highly configurable allowing our customer to implement Industry 4.0 with confident.





Introduction

HF Technology Sdn Bhd is an established company specializing in PC-based industrial automation, control & measurement hardware solutions.

Our business encompasses a wide sectors namely; test & measurement, machine automation, telecommunications, process control, factory automation, medical instrumentation, research laboratories, building automation, intelligent automation transportation system and Internet of Things (IoT).

Our Product Range



Our Partners

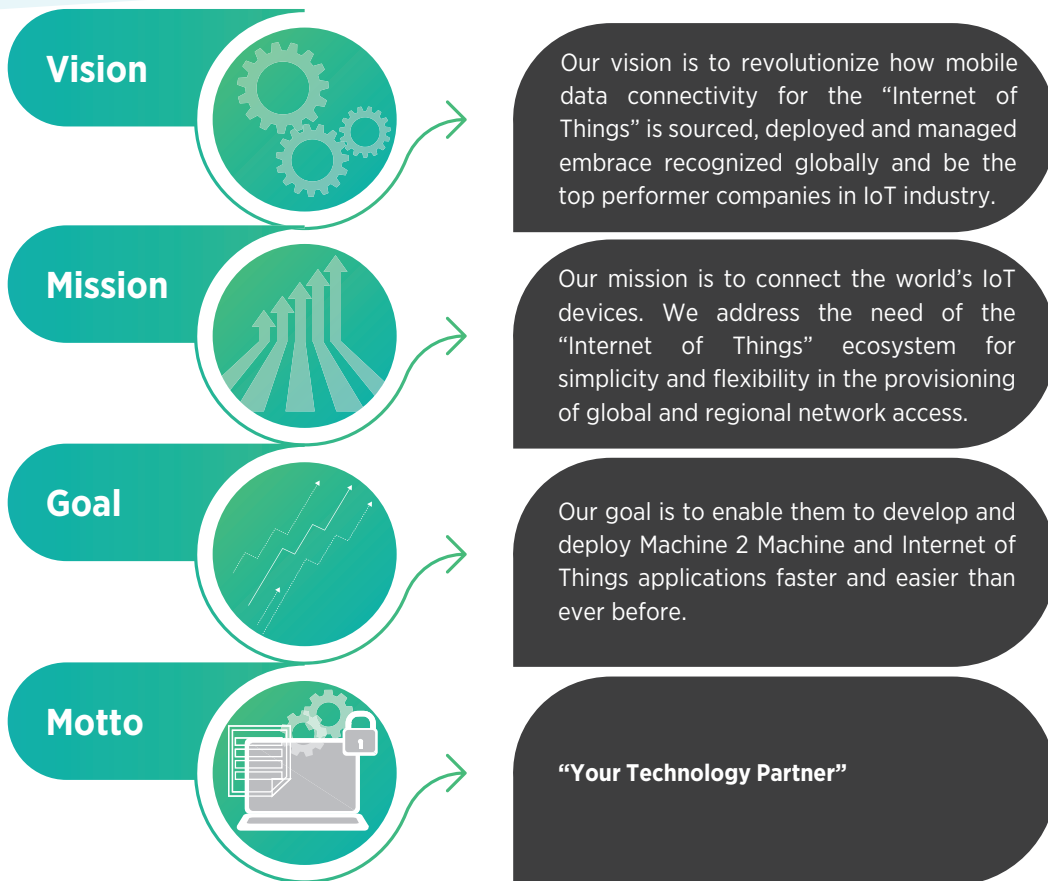




IIOTTECH SDN BHD

Introduction

IIOT Technology is an exciting start-up company offers comprehensive end-to-end IoT solutions that unlock the huge emerging opportunity of Malaysia Industry 4WRD Framework and Global Industrial Revolutions.



Business Activities

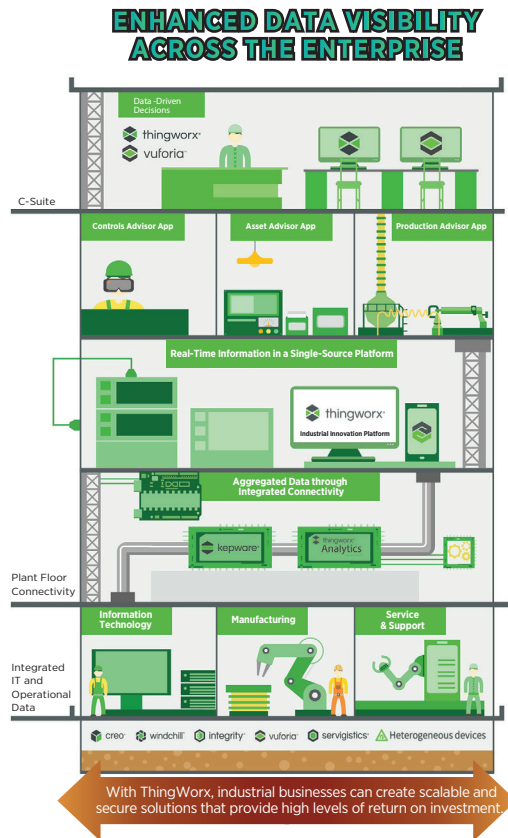
- Business Transformation and Digitalization Consultancy
- IoT /IIoT and Augmented Reality System design and deployment
- Solution Provider and System Integrator
- Industrial connectivity, M2M 3rd party middleware solution and services provider
- Data digitalization and CAD scanner technology services
- Robotics, Automation parts and system suppliers
- Suppliers and services provider
- Electrical automation hardware and appliances
- Consultancy & SI Services - Big Data, Analytics, AI, ML, IoT & AR
- ARVR Content Development & Machine To Machine Connectivity
- Hardware Supply & Services including IoT Devices, AR Learning Product
- IT deployment, Website, Graphics, Logo and Portal Services

Products

ThingWorx thingworx®

Purpose-built for industrial environments, the award-winning ThingWorx industrial innovation platform empowers organizations to transform how they operate and compete in the smart, connected world by rapidly implementing IoT solutions.

A complete, end-to-end technology platform, ThingWorx delivers the functionality, flexibility and agility needed to develop, deploy and extend IoT applications and AR experiences. The platform contains a broad set of features, including multiple connectivity options, application development tools, analytics, and AR – all built around the ThingModel, which is a single, real-time view of a physical object.



Products

Vuforia Studio vuforia™

Rapid Augmented Reality (AR) Authoring Solution.

Vuforia Studio provides industrial companies with the tools to quickly create and widely deliver AR content that transforms operations, facilitates knowledge transfer and improves profitability.

Key Features at a Glance:

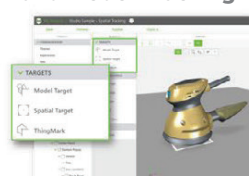
Drag and Drop Authoring



On-Line and Offline Experiences



Advance Spatial and Model Tracking



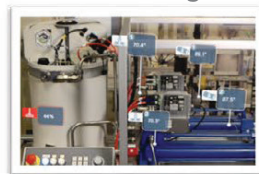
Certified Hosting Cloud and On-prem



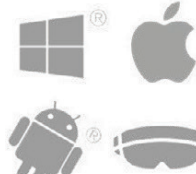
Assisted Reality



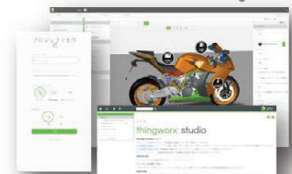
Native IoT Integration



Universal Viewer



Global Scalability



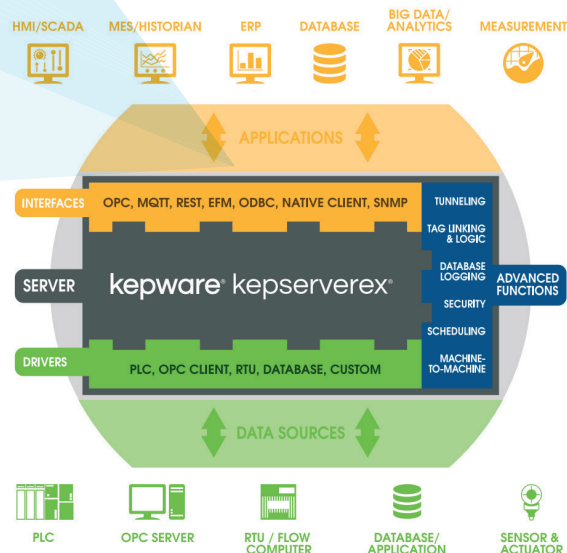
Product



Connectivity for Predictive Analytics

KEPServerEX is a single solution for collecting aggregating and providing secure access to industrial operations data.

Its platform design allows users to connect, manage, monitor, and control diverse automation devices and software applications – from the plant control system to enterprise information systems.



Partners & Past Projects



Past Projects

CIDB Green Card Printing and Perso Module for Bayo Pay and CIDB

Percetakan Nasional Malaysia Berhad (PNMB)

Asean Summit Event 2015

Ministry of Home Affair (MOHA)

Percetakan Nasional Malaysia Berhad (PNMB)

Kementerian Komunikasi dan Multimedia Malaysia (KKMM)

Taman Botani Negara Shah Alam (TBNSA)

Malaysia Automotive Institute (MAI)

Picture Archiving and Communication System Server for Hospital Pengajar Universiti Pertanian Malaysia

Robe Academic Tracking with RFID for USIM Asean Summit Card

RFID for Original Video

Mixed Reality experience using Microsoft Hololens

iKad Foreign Worker, Expatriate, Pass Resident for Imigresen Malaysia

Mixed Reality experience using Microsoft Hololens

360 Virtual Tour of Taman Botani Negara Shah Alam

Augmentic Reality (AR) application and Mixed Reality experience using Microsoft Hololens for Malaysia Autoshow 2018 Exhibition

Industry 4.0 - Key Elements

Intelligent sensors and actuators

Enable data collection and obtain direct feedback from machines for data analysis.

Real-time data analytics

Real time analytics is possible on the edge (local), and in the thing itself (sensor), leading to distributed computing.

Robotics

Collaborative robots create new opportunities to work together with human and change the working environment.

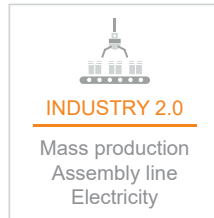
Next generation manufacturing system

Equipment, software, and new knowledge and skills are needed to meet the next generation manufacturing.

Additive manufacturing

Durable and geometrically complex products can be produced, free from traditional manufacturing constraints.

Industry 4.0 - Accelerating Digital Manufacturing



OUR EXPERTISE

BIG DATA ANALYTICS

Real-time Overall Equipment Effectiveness (OEE)

- Direct communication with machines
- Automate data collection
- Real-time status and throughput

Predictive maintenance

- Monitor condition of in-service equipment
- Time-based preventative maintenance

Energy management system

- Metering, sub-metering and monitoring functions
- Save cost by optimising energy usage

Manufacturing operations management

- Optimise end-to-end manufacturing process

AUTOMATION

Intuitive industrial robotic arm

- Improve productivity by 95%
- Reduce labour cost
- Interactive and flexible deployment



DIGITISATION

CAD/CAM/CAE

- Optimise design before manufacturing
- Shorten design cycle

SYSTEM INTEGRATION

Digitising old machine

- Integrate new system for digital manufacturing
- Interconnect entire organisation's system

INTERNET OF THINGS

Intelligent sensors and actuators

- Seamless data collection from machines
- Decentralise decision-making

SIMULATION

Virtually simulate and optimise process

- Leverage real-time data
- Virtually models machines, products and humans

Industry 4.0 - Readiness Workshop

5 STEPS

To Kick Start Industry 4.0

Step 1: Preparation (Prior to the workshop)

- Industry 4.0 readiness assessment
- Comprehensive assessment of strength and weaknesses
- Align expectation towards Industry 4.0

Step 2: Analysis

- Identify current state of organisation and competency level
- Measure gap between own competency and perceived competency

Step 3: Creativity

- Idea generation
- Establish Industry 4.0 ready business model

Step 4: Evaluation

- Evaluation of business model
- Develop clear vision on future product & production
- Prioritise; define short term and long term goals
- Derive the implementation road map

Step 5: Implementation (After completing the workshop)

- Walk the talk
- Continuously review progress and improvement

TRAININGS

Equip your workforce with 4.0 skill sets

1. Industry 4.0 fundamental

- a) Introduction and demystifying I4.0
- b) Key I4.0 technologies
- c) Human and machine collaboration
- d) Managing I4.0 change
- e) Alignment between I4.0 and business strategies

2. Industry 4.0 readiness assessment

3. Design automation

4. Industry 4.0 pillars related courses

- a) Product simulation
- b) Production simulation
- c) System integration
- d) Additive manufacturing
- e) IIOT

5. Control and manufacturing automation

- a) Sensors
- b) PLC
- c) SCADA
- d) RFID technology
- e) Flexible manufacturing

6. Lean manufacturing

7. Predictive maintenance

8. IIOT software development related courses



MAXTRAX ENGINEERING SDN BHD

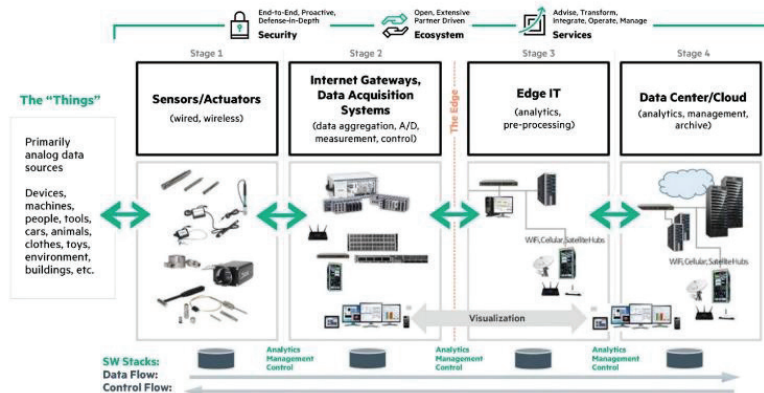
**“Maxtrax, building your solution.
Your reliable solution alliance partner”**



What We Offer

- Customized PC based automation solution including software development & hardware design. Familiar with Industrial 4.0 web-based solution including Sensor deployment, Data collection & crunching, Data analysis, Equipment Monitoring, Lab Management System, Test Scheduler System, etc.

Max_Total Industrial 4.0 Solution



Simple and easy retro fit to get started with Maxtrax ID4.0 solution, then isolated upgrade and changes to the process, system and machine based on customer need and plan as we go along. Self-developed intelligent sensor module with various types of input signal integrated within web-based data acquisition system upload big data to cloud for processing.

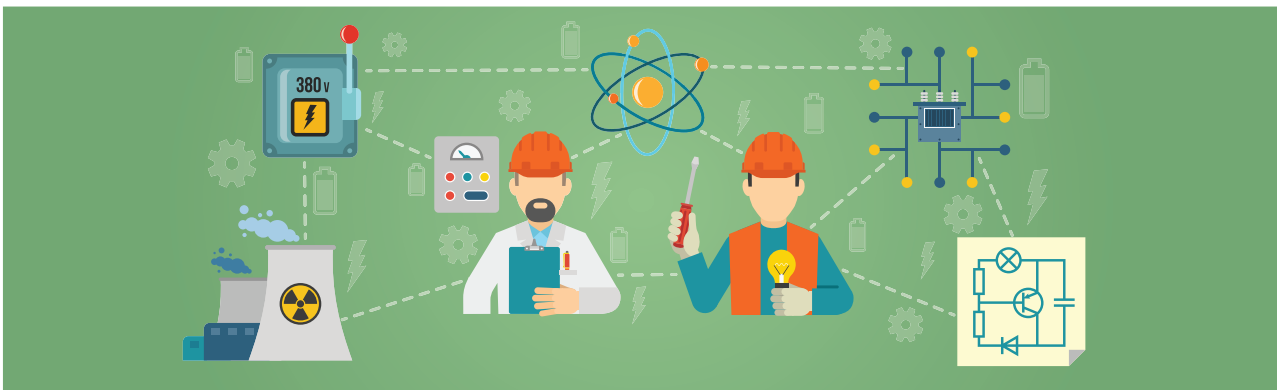
- TCP/IP & WIFI connection
- Support different type of plug-in module e.g. RS232/RS485 module, TC module, analogue input module and so on.
- Bridge between equipment and monitoring software
- Low cost & highly flexible.
- Module under development



Max_Total Production Maintenance

TPM is a system of maintaining and improving the integrity of production and quality systems through the machines, equipment, processes, and employees that add business value to an organization.

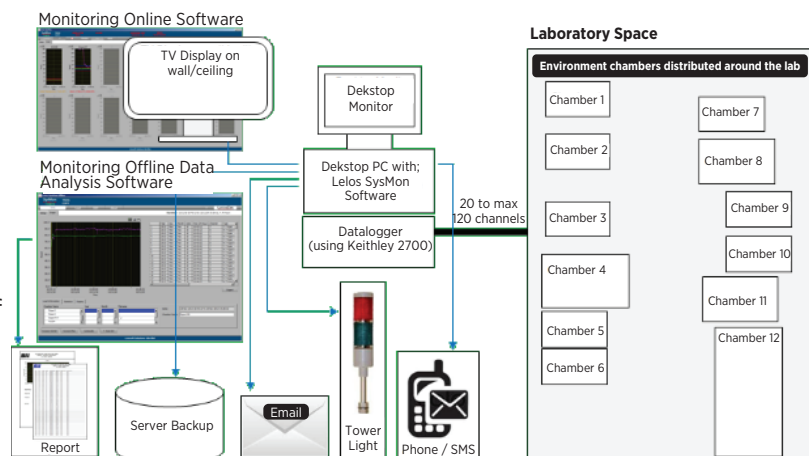
- Station status monitoring
- Station down time tracking
- Identify better preventive maintenance
- Equipment & machine operation cost tracking
- Staff activity tracking (justify OT & capacity)
- Improve staff productivity
- Better manage staff resources
- Keep complete maintenance record
- Knowledge base of maintenance procedure
- Complete and accurate machine condition and status
- Reduce part inventory
- Better pro-active / preventive maintenance (reduce break down time and cost)
- Reduce production down time



Max_Equipment Monitoring System

Equipment Monitoring System (EMS) is a system of real time monitoring for different type of equipment and improving the integrity of production and quality systems that add business value to an organization. Different types of triggering method can be implemented depend on the equipment status urgency.

- Equipment status monitoring
- Equipment down time tracking
- Identify better preventive maintenance
- Equipment and machine operation cost tracking
- More equipment insight to staff
- Improve staff handling on equipment
- Reduce equipment dependency on staff
- Reduce equipment capital expenditure
- Reduce production down time
- Improve production throughput



Max_Smart Locker System

Smart Locker System (SLS) is a system of real time monitoring for storage, usage and part control to link with server and become a quality system that add business value to an organization.

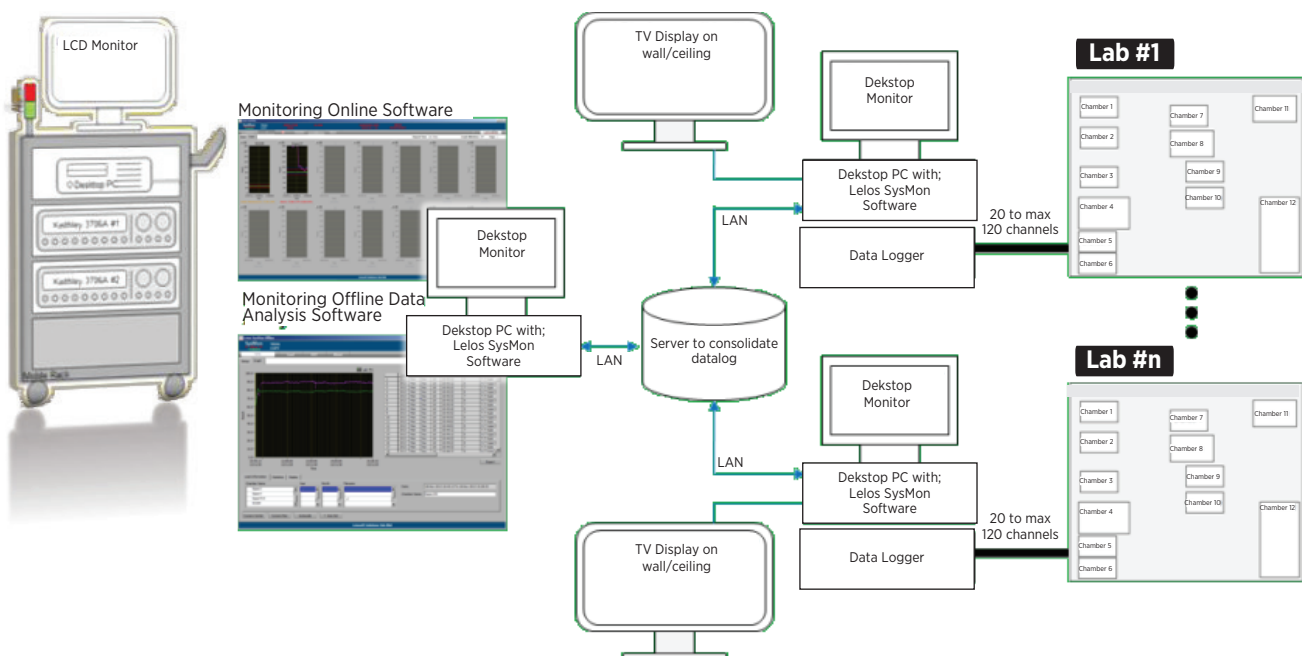
- Inventory status monitoring
- Better manage inventory resources
- Staff activity tracking
- Improve staff productivity
- Reduce unnecessary part inventory
- Reduce production down time
- Inventory auto replenish functionality
- Complete and accurate inventory location and status



Max_Centralized Monitoring System

Is an extremely versatile, channel scalable centralized oven/chamber monitoring and alarm system. It is ideal for real time monitoring of a wide range of parameters e.g. temperature, humidity, pressure, flow rate, voltage, current, resistance and etc. Also, capable to take measurements over large areas such as factory laboratories and production floors. The data is viewable in real-time graph, spreadsheet or graphical format via supplied Offline software for trend analysis.

Apply various types of DAQ as mainframe and various different MUX/matrix card to compliment MAX_centralized monitoring system.



Max_Lab Management Solution

LAB MANAGER

Station Status

Status	Running
On Schedule	Yes
Start Time	18/02/2018 14:00:00
Estimated End Time	18/02/2018 17:00:00

Test Schedule

Tracking Number	Description	Station	Incoming Status	Schedule Start Time	Schedule End Time	Start Time	End Time	Remarks

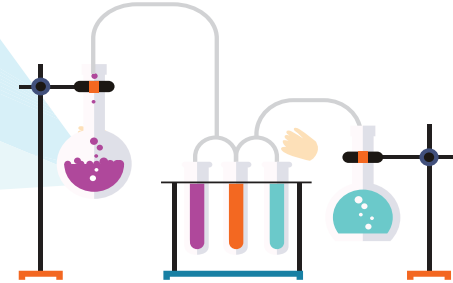
DUT List

Tracking Number	Model	Serial Number	Type	Remarks

Alarm List

Tracking Number	Station	Registered Time	Status	Estimated Resolution Time	Remarks

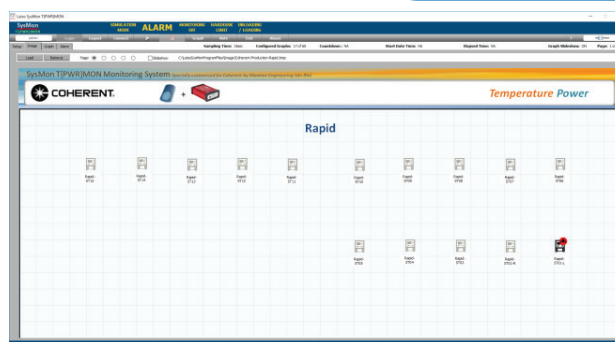
Buttons: Check in, Check out, Trigger, Update, Resolve



Lab Management System (LMS) is the system software that manage the overall lab day to day activities and such as keep track of the location of all the assets in the lab and its operational status. Besides, it will also keep track of the status of product and the registration of product flowing into and out of the lab. LMS will also work and integrate with self-developed Test Station Management System (TSM) to manage all the Test Stations available within the Lab and their collective operations. There are various components that make up the Lab Management System, they are listed below together with a brief description of their functions.

Max Server-Client System

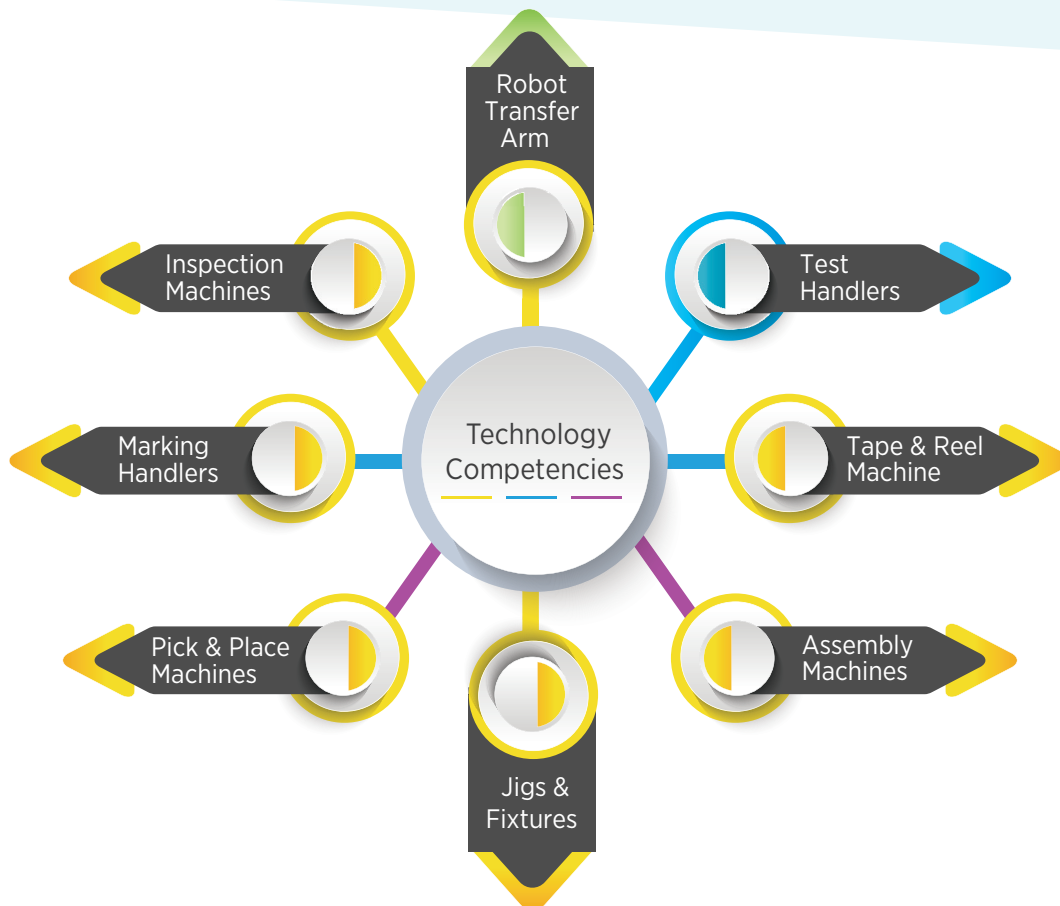
SEC/GEM alike equipment interface protocol for equipment-to-host data communications. Client software installed at equipment controller for remote control/recipe handling/data feedback. Host controller hand shake with all client software to collect measurement result for dashboarding, then perform data crunching and upload to customer server database or hand shake with customer IT host for some other task.



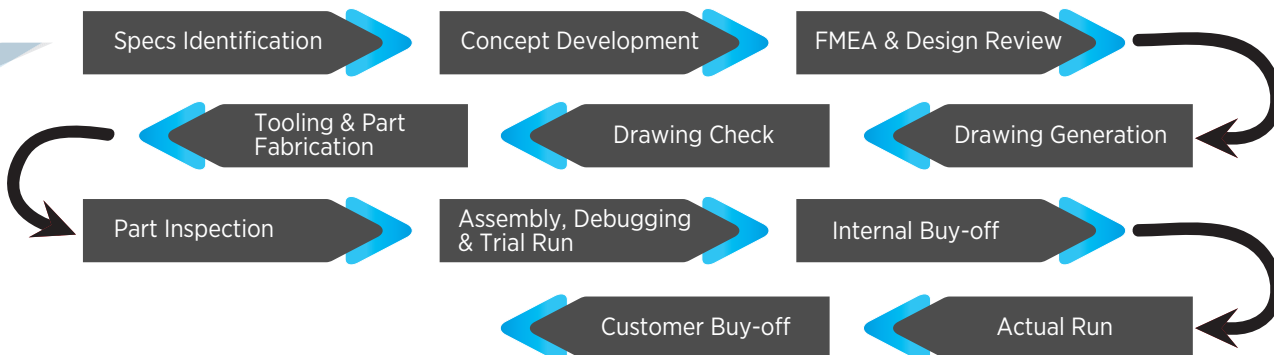


MEXCEL TECHNOLOGIES SDN BHD

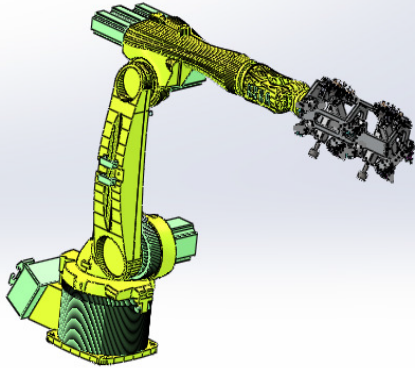
Our Expertise : Automation



Our Quality System

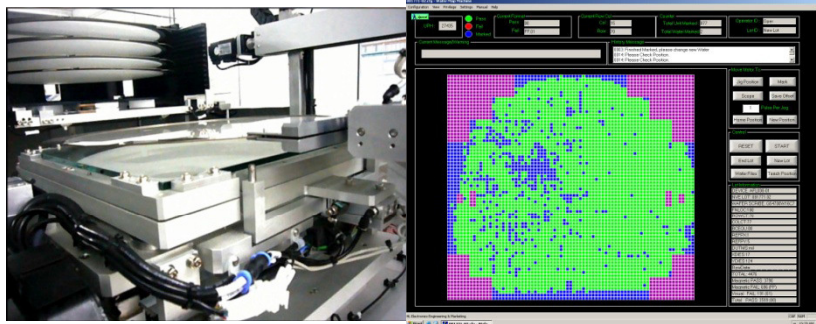


Robot Transfer Arm



- Transfer parts between module to module
- Detecting part presence before /after transfer
- Hand-shaking between robots & machines
- Design with load calculations & robot positioning error compensation
- Options: laser sensor height feedback, vision camera inspection and barcode scanner module

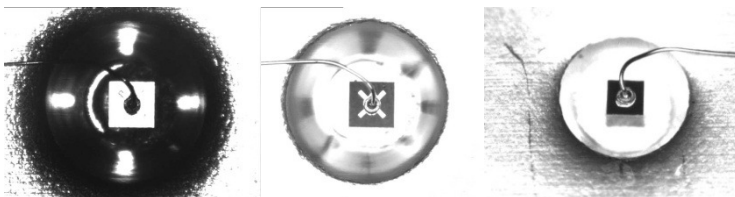
Wafer Inspection System



- Auto wafer loading/unloading
- Automated defect classification
- Map creation/updates of wafer map
- Statistical descriptive analysis of defects
- High-resolution and high-precision X-Y table
- Window platform with user-defined specifications
- Built-in calibration feature
- Library based uploading for different types of unit

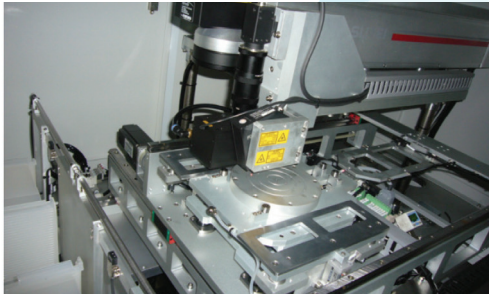
Die Attach Inspection Machine

- Auto loader/unloader for substrate
- Automated defect classification
- Map creation/updates of defect dies
- Statistical descriptive analysis of defects
- High-resolution and high-precision X-Y table
- Window platform with user-defined specs
- Auto-generation of GR&R report
- Library based uploading for different die types
- Perform die type checking
- Perform Die Centering position/offset inspection
- Perform silver epoxy coverage inspection



Wafer Marking Handler

- Auto wafer loading/unloading
- Perform code marking or reject marking on dies
- Wafer map creation/updates of loaded wafer map
- Window platform with user-defined specifications
- Built-in calibration feature
- Library based uploading for different types of die



Laser/Inkjet
Marking Machine



Test & Tape
Handler



Pick & Place
Machine



Test
Handler





NSCB SYSTEM SDN BHD

Company Overview

There are approximately RM 1 billion lost for every public holiday in Malaysia according to a research by Malaysian Employers Federation in 2019. Meanwhile, the average number of public holidays in Malaysia are around to 18 days. The potential of replacing human touch with precise machine automation may significantly reduce the lost incurred during these public holidays and increase the overall efficiency of a factory with shorter downtime as machines can work longer hours as compared to human. In the meantime, the cost of investment will dramatically reduce over time because labour cost increases over time, while automation machines are only a one-time investment with minimal upkeeping cost.

NSCB System Sdn. Bhd. is leading the lights-off factory concept in Malaysia. We are specialized in providing cost effective automation solutions for semiconductors and electronics packaging industries since 2013. We aim to help companies to achieve effectiveness and efficiency in manufacturing through our expertise in automation solutions.

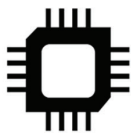
Our Vision

A production line with minimal downtime and latency

Our Mission

To eliminate production downtime through research and development of machine automation; and to reduce the initial cost of adopting lights-off factory concept.

Range of Product



Semiconductors



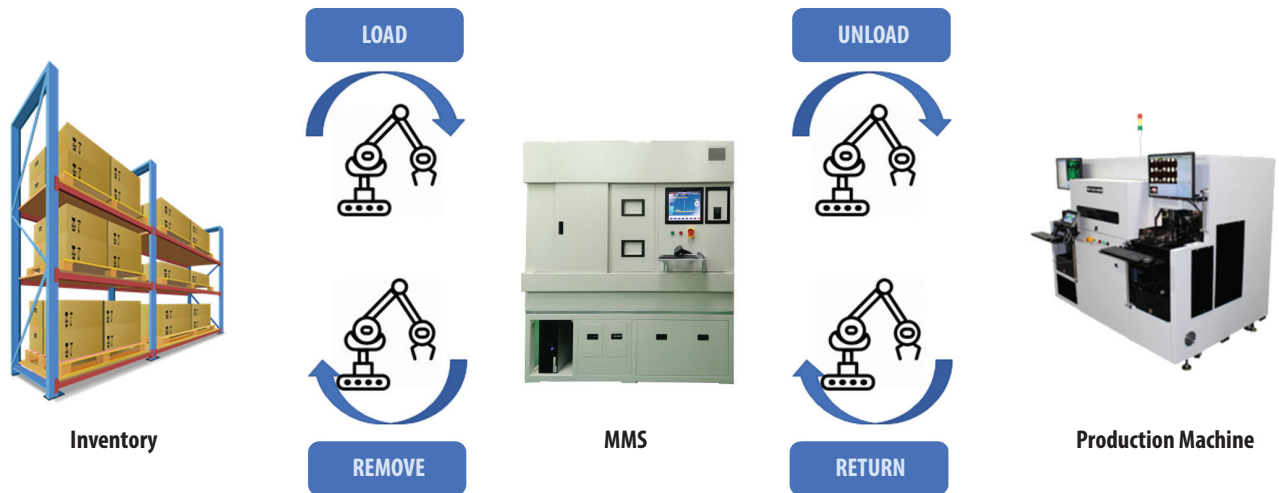
Smart
Manufacturing



Automation



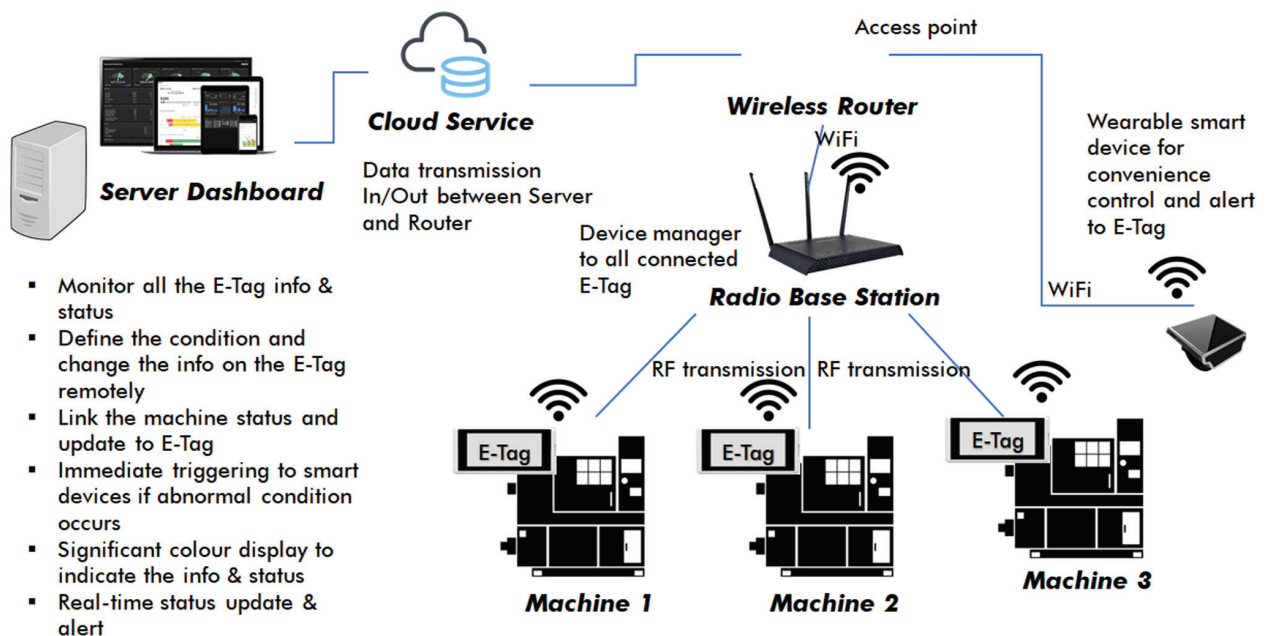
Material Management Solutions



Four Main Process:

1. Load : Store new inventory from storage
2. Unload : Dispense goods from the MMS.
3. Return : Return used/empty box to MMS.
4. Remove : Remove goods from the MMS.

Machine Alert Triggering



AGV - Automated Guided Vehicle

Technical Item	Description
Guidance Type	Track (Magnetic tape) / Trackless (Lidar)
Load Capacity	<300KG
Base Dimension (W x L x H) mm	~ 430 x 1000 x 300
Max Travel Speed (m/min)	60
Motor	Servo Motor with Brake
Recharge Time (Hrs.)	4
Run Time (Hrs.)	8
Stopping Accuracy	±10mm (Track) / ±50mm (Trackless)
Charging Option	Automatic Charging
Battery	LiFePo4 Battery, 25.6V 65Ah
AGV Body Material	Mild Steel with powder Coating
Gradient	< 4°
Load Transfer	Manual
Safety Features	5m Adjustable Range Laser Scanner Distance Sensors Emergency Switch Safety Indicator LED Light



Pythonic - Unit Counter Machine



Technical Item	Description
Machine Dimensions	1280mm (L) x 1680mm (H) x 1280mm (W)
System Input Voltages	Single Phase, 230VAC, 3-wires
Current	13A (MAX)
System Frequency	50Hz or 60Hz
Pneumatic Input	Regular air pressure 5 ~ 6 Bars
Display Panel	Monitor / Touch Panel LCD
Weight	~450kg
Key Features	<ul style="list-style-type: none"> Pythonic vision for component. An automated tray-stacking component accommodating up to 10 JEDEC trays (1 Load/Unload/Selected Station). Top vision camera for DUT. Programming with direct input, or teaching recognition camera. User friendly interface and simplified operation controls. Configurable recipe and process flow. PC controller, monitor, and keyboard included with Windows 10 based control software.



ORIONPLEX SDN BHD

Company Overview

Orionplex was officially established by 2 MNC RND engineers and now running into 13 years.

This company started as training consultant and then years later also serve as an overall engineering and IT solutions provider to MNC companies, local SME industries, universities and public end-users.

Vision

Innovative Vision Solutions for Inspections

(Electrical + Electronic + Mechanical + Software) Vision

Background

What is vision inspection? The application of vision for monitoring, recording and inspection have been gradually used in factories. It is mainly used for replacing human eyesight inspection.

Problem Statement

Challenges faced when vision inspection is done through human eyesight checking

- High repeatability inspection
- Speedy inspection
- Long inspection hours
- High accuracy in detection outcome
- Inspection result and performance may vary due to ambience factors (brightness, light consistency)

Contact Us

We have many years of experience in the factories, R&D and education fields, covering various engineering disciplines. We **specialise in innovative design** that are customised and embedded into solutions for customers. We focus on

- meeting customer requirements
- product cost effectiveness
- streamlining operational workforce
- Compliance of design and customised solutions to quality and regulatory standards

Project Accomplished

Fabricated Parts and Assembled Parts

- Inspection system is built from low-cost and easily obtainable components and models
- Inspection system is maintainable and ready for further upgrades and features enhancement
- Easy to operate, saving time performing test configuration for vision inspection.

All pictures shown are for illustration purpose only.

IOT

Innovative Data Access Wirelessly

(Electrical + Electronic + Mechanical + Software) IOT Solutions

Background

What is IoT? The internet of things, or IoT, is a system of interrelated computing devices, mechanical and digital machines, objects, animals or people that are provided with unique identifiers (UIDs) and the ability to transfer data over a network without requiring human-to-human or human-to-computer interaction. It allows objects to be controlled remotely across existing network infrastructure.

Problem Statement

- High potential of committing human error in observing, reading, recording and reporting
- High tendency of data inaccuracy when simplifying result observation and recording.
- Not able to instantly acquire and consolidate data for analysis
- High customization in the design needed for every unique application

Contact Us

We have many years of experience in the factories, R&D and education fields, covering various engineering disciplines. We **specialise in innovative design** that are customised and embedded into solutions for customers. We focus on

- meeting customer requirements
- product cost effectiveness
- streamlining operational workforce
- Compliance of design and customised solutions to quality and regulatory standards

Project Accomplished

RFID wand for warehouse operation management

- Capable to detect and count product's quantity
- Able to differentiate product based on model and brand
- Allows phone app to communication to RFID wand
- Ability to dispatch data and information then send it to database wirelessly

NHF -Data Retriever

- Enabled wireless remote log in to access data
- Capable to instantly acquire and consolidate data for analysis
- Able to show instant data parallel to all other interested and needed information
- Automated data/information process, backup and big data formation

All pictures shown are for illustration purpose only.

Embedded System

Consultation of Design Methodology

(Electrical +
Electronic +
Mechanical +
Software) Embedded System

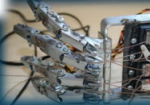
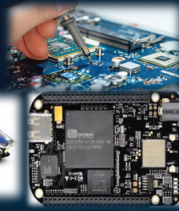


Background

Software inside microcontroller and to interact with other IC via peripheral interrupts to register for imaging purpose.



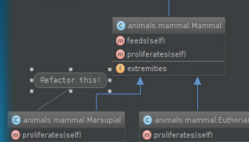
All pictures shown are for illustration purpose only.



Project Accomplished

Embedded Firmware Solution
Texas Instrument
STM, PIC

Low level driver, SPI, I2C, UART, Timer, GPIO, Watchdog, Interrupts, Memory, Boot Loader, RTOS, Kernel, E-flash



Problem Statement

Problem Statement/Challenges

- Different digital platforms different compilers
- Different digital platforms different architectures
- Different applications needs different custom design if electronic board/IC which interact in some specific processor architecture with customised design of hardware peripheral modules.

Contact Us

We have many years of experience in the factories, R&D and education fields, covering various engineering disciplines. We **specialise in innovative design** that are customised and embedded into solutions for customers. We focus on

- meeting customer requirements
- product cost effectiveness
- streamlining operational workforce
- compliance of design and customised solutions to quality and regulatory standards

Connectivity

Innovative Connectivity Test Solutions

(Electrical +
Electronic +
Mechanical +
Software) Connectivity

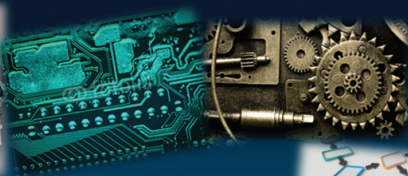


Background

What is product connectivity? Product is formed by multiple components and modules. Each component has interfacing entries to facilitate communication between points. It is crucial to ensure connectivity between points are properly interconnected.



All pictures shown are for illustration purpose only.



Project Accomplished

Complex Organisation Structure in Product

- Able to automate connectivity checking from point to point
- Single-press testing for all connection points
- Low cost connectivity test kit
- Low maintenance: Components and modules used in test kit are easily available in the market

Problem Statement

In general, the challenges are

- Difficulties in achieving a complete and full coverage connectivity test for a product due to the high number of interface connectivity combinations to be tested and validated.
- High possibility of missing out the connection points to be tested
- Require long testing duration to achieve full testing coverage.

In specific engineering discipline

- Electrical- Ensure each interfacing point/interconnectivity point are properly shorted and isolated according to routing and logic design.
- Mechanical-Ensure that inter-connectivity points are properly engaged, mounted and connected in the right orientation.
- Software -Ensure that all the function arguments and interfacing are correct as per the complete flow.

Contact Us

We have many years of experience in the factories, R&D and education fields, covering various engineering disciplines. We **specialise in innovative design** that are customised and embedded into solutions for customers. We focus on

- meeting customer requirements
- product cost effectiveness
- streamlining operational workforce
- Compliance of design and customised solutions to quality and regulatory standards

Design

Consultation of Design Methodology

(Electrical +
Electronic +
Mechanical +
Software) Design



Background

What is design? Design in engineering refers to a process consisting of a series of steps that engineers follow to produce a solution to a problem that meets certain criteria and/or accomplishes a certain task. A few examples:

- Design in factory focuses on manufacturing process.
- Design in test refers to test solutions that can achieve a full-proof test coverage

All pictures shown are for illustration purpose only.



CAD

Project Accomplished

IC IP test design new approach

Utilise UML approach and customised unique system design methodology for giant IC MNC.

Software Engineering for various products

Consulted software programmers and engineers from local SMT to giant MNC.



Problem Statement

Problem Statement

- Design process and methodology vary according to different industry, product and environment.
- Complicated design process leads to a lot of excessive time spent and resources needed which will create negative impact to business
- Design standard and quality issues arise
- Achieving a sufficient level of customisation in the design to ensure effectiveness and balance in terms of quality, time, resource, cost, etc.

Contact Us

We have many years of experience in the factories, R&D and education fields, covering various engineering disciplines. We **specialise in innovative design** that are customised and embedded into solutions for customers. We focus on

- meeting customer requirements
- product cost effectiveness
- streamlining operational workforce
- compliance of design and customised solutions to quality and regulatory standards

Probe

Innovative Probing Solution

(Electrical +
Electronic +
Mechanical +
Software) Probe



Background

What is probe? Probe is the front-end module in the validation system line up to channel the UUT signal for next stage of testing/measurement.



All pictures shown are for illustration purpose only.

Project Accomplished

Complex wiring in a very limited space product housing

- 1 step setup for all probe point to be ready
- Handled probing points that are beyond line of sight and hand-unreachable
- Extended and flattened the probing points within the module on a test board
- Safety protection implemented to prevent operator from hazardous electrocution by UUT



Physical Hardware Probing

- Restrictions and inconvenience in probe testing due to limited spacing between probe points, out of line-of-sight and hand-unreachable probe points.
- Post high risk of danger to operator to test out probe points around hazardous corner

Software Probing

- For Software that is loaded on a target, how can we perform probing when the software is embedded in the target hardware?
- Grey/Black box probing: The approach needed to perform software probing without knowing grey/black box operation flow
- White box probing: Concern to supplier in terms of IP disclosure on white-box probing approach.
- For software that is NOT loaded on any target, it has no physical probe points on some of the software products. Some probing requires complex/expensive machine for some of the software probing.

Problem Statement

Contact Us

We have many years of experience in factories, R&D and education fields, covering various engineering disciplines. We **specialise in innovative design** that are customised and embedded into solutions for customers. We focus on

- meeting customer requirements
- product cost effectiveness
- streamlining operational workforce
- compliance of design and customised solutions to quality and regulatory standards

Load

Innovative Load Design for Test

(Electrical +
Electronic +
Mechanical +
Software) Load



Background

What is Load? Load acts as an actual machine system that determines a system's performance under real-life load conditions including customer usage pattern. It helps to determine the maximum operating capacity of an application. It also help to ensure factory has friendly model that can reflect the actual load capacity and pattern in product key testing for quality assurance.



Problem Statement

In the factory, the actual load used for testing has wide range of factors and variations. To meet the most optimum load design and test, the load needs to be small in dimension, meet actual load usage patterns, low cost to mimic actual load behaviour, less complexity, short load test duration, operations and executions.

Project Accomplished

Complex High AC Power Module Test Instrument

- Designed XKW test load for customer
- Capable to mimic real load and designed a downsized, space saving, cost effective, safety compliant load tester
- Components in designed load are easily obtainable and available in the market
- Designed load tester is maintainable and readily for upgrades
- Easy to operate, time-saving in test configuration to mimic real load test in factory environment



All pictures shown are for illustration purpose only.

Contact Us

We have many years of experience in the factories, R&D and education fields, covering various engineering disciplines. We **specialise in innovative designs** that are customised and embedded into solutions for customers. We focus on

- meeting customer requirements
- product cost effectiveness
- streamlining operational workforce
- compliance of design and customised solutions to quality and regulatory standards

Customized Solution Designer, Developer & Deployer

Specialize in providing services including multi-disciplinary solutions design based on customer's requirement, full development and solutions deployment in various business fields.



PACKAGING SALES & SERVICE (M) SDN.BHD

Who We Are

With industry experience of 40 years, PSS is a leading Malaysian based system integrator (SI) cum machine manufacturer with 60 highly skilled workforce from engineering background.

What We Do

We provide turn key solution for various packaging and coding applications. Our key strength being large capacity FMCG packaging and palletising solution. We are also expert solution provider for various factory automations.



Our History

PSS history goes way back to 1979, when we made our debut in the packaging industry as Packaging Services & Supplies. Our business started as machine and consumable supplier.

The year 2000 saw our company receiving Enterprise 50 award, competing among renowned SMI's in a nationwide poll undertaken by Arthur Anderson, co-sponsored by RHB Bank and SMIDEC and sanctioned by the Ministry of Trade and Industry (MITI), Malaysia.

Today with our headquarters straddling more than 15,000sq. feet and strategically sited at one of the nation's most established industrial hubs - Shah Alam - we have established a branch network that spans the country as well as ASEAN and AFRICA region.

Our Aim

To provide stable & reliable machines with dedicated after sales service.

To build the machine that meets the customer's specifications and requirements.

To continuously improve ourselves and to further improve our support for our valued customers

SMART 4.0

Moving Towards Full Implementation Of Industry 4.0

A solution by PSS for smart factory implementation, empowered by Industry 4.0 platform with IoT enabled component

- Internet Of Things (IoT)
- Autonomous Robotic
- 3D & Simulation
- System Integration
- Augmented Reality

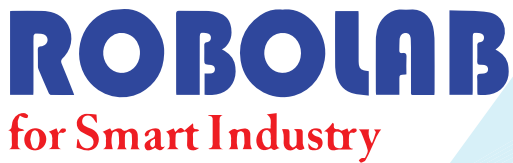
WHY SMART 4.0

- Monitoring of Overall Equipment Effectiveness (OEE) to improve production efficiency with lower down time.
- Production and Product Traceability
- Life Cycle Analysis
- Energy Saving



LET US SHOW YOU!

- Design, Analysis & Simulation
- Parts Fabrication & Assembly
- Automation & System Integration
- After Sales Service & Support
- Annual Maintenance Contract (AMC)
- Project Management



ROBOLAB Technology Sdn Bhd

Introduction

Robolab Technology Sdn. Bhd. is a technology based company in the Fourth Industrial Revolution era. We are a company established in Malaysia since 2010. Our experienced professionals have offered the best in Research, Consultancy, Solutions, Support, Professional Service and Training in various industry. We utilize know-how and experience to develop efficient solutions for our customers.

We provide Systems Integration & Engineering, Value Engineering, Research & Development, Onsite Commissioning & Start-ups, Field Service and Training.

We deliver unique solutions that put our customer's needs first while offering the most competitive solution in the industry. We are shaping the future. We aim to become your reliable partner towards Fourth Industrial Revolution.



OUR VISION

Robolab Technology vision is to be the leader in Intelligent Manufacturing solutions, providing research, consultation, solutions, support, service, and training to our clients.



OUR MISSION

Our mission is to provide technology solutions with professional support services. We utilize know-how and experience to develop efficient solutions for our customers. Our experienced professionals are empowered to deliver unique solutions that put our customers' needs first while offering competitive rates towards the Fourth Industrial Revolution.



OUR VALUES

Think Smart, Act Fast, Always deliver more than expected.

Business Activities



Robotics &
Automation
Systems



Sales & Rental



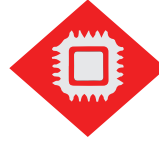
Process
Analysis &
Improvement



Project
Management



Value
Engineering



Intelligent
Manufacturing
Systems Design &
Strategy Consultancy



Research &
Development



Certification,
Coaching
& Training

Client

Malaysia:

- MSM International Limited
- MSM Metal Industries Sdn. Bhd.
- Intellogic Technology Sdn. Bhd.
- Gene Automation Sdn. Bhd.
- Master Steel Sdn. Bhd.
- Marc Conlath Industries Sdn. Bhd.
- FIC Kitchen Technology Sdn. Bhd.
- OMS Technology Sdn. Bhd.
- Marc 16 Equipment Manufacturing Sdn. Bhd.
- Flexacon Automation Sdn. Bhd.
- Simmson Engineering Sdn. Bhd.
- PG Chem Sdn. Bhd.

Brunei:

- Institution of Mechanical Engineer (Brunei)
- Universiti Teknologi Brunei
- Jurutera OMC

Cambodia:

- Board of Engineers Cambodia (BEC)

China:

- China Mechanical Engineering Society (CMES)
- Zhejiang University of Technology

Indonesia:

- PT Mulia Sinergi Metalindo

Alliance



Chinese Mechanical
Engineering Society



中国仪器仪表学会
CHINA INSTRUMENT & CONTROL SOCIETY



MiSi 4.0





SOFTROCK TECHNOLOGIES SDN BHD

About Us

“To be able to **integrate all types of machines** regardless of the machines’ automation level. We aim to make **automation intelligence universally accessible** and essential to our clients.”

“Since the beginning, our goal has been to develop services that significantly **improve transparency of the production floor**. This will enable manufacturers to bring their performance to the next level by optimizing the usage of resources, minimizing wastage, and ultimately allowing production to be extremely **cost effective**.”

CONNECT THE UNCONNECTABLE

Our Services

Industry 4.0 Machine Integration

- Factory Horizontal Integration
- Making machines I4.0 compliant

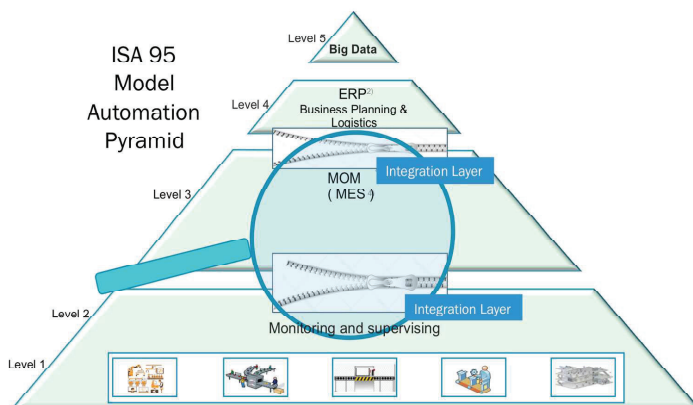
Factory Automation

- Machine Refurbishment
- Process Automation Design and Engineering

Customised Solutions

- Customised solutions to enhance operations
- Process Reporting

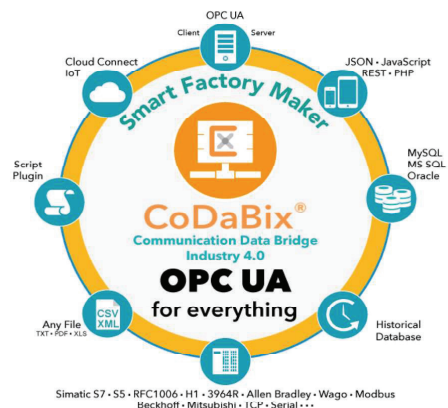
Our Focus



Bridging the communication gap between

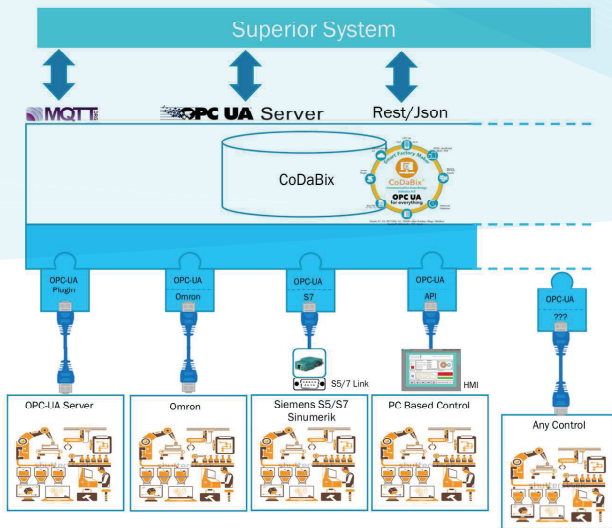
1. Level 2 and Level 3
2. Level 2 and Level 4

Our Product



CoDaBix(R) is a **bidirectional universal “Communication Data Bridge”** that enables Industry 4.0 compliance.

Our Solutions



CoDaBix(R) is a universal gateway which connects a variety of subordinated machines and equipment from:

- **different vendors,**
- **with different intelligence,**
- **different communication methods,**
- **different protocols.**

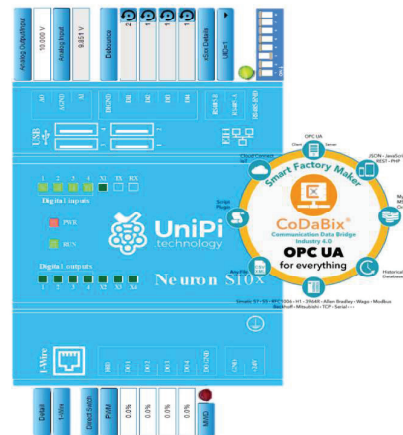
CoDaBix converts native equipment raw data to the Industry 4.0 compliant communication standard OPC-UA.

IIOT Getaway Solution

Machine Refurbishment with the onboard

- digital and analogue I/Os
- USB to RS232 & RS485
- HDMI display port

we can make “dumb” machines smart!

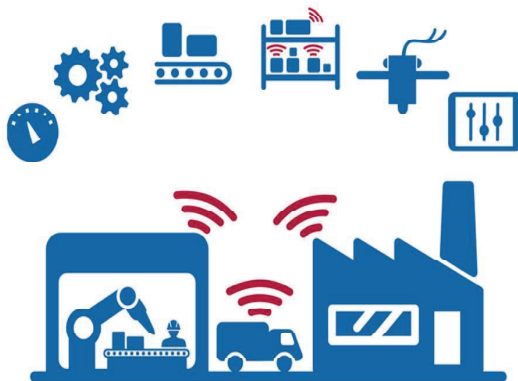


BRAND NEW! Iot Device Based On Raspberry Pi 4



- Internal full coverage heatsink with optional double fan
- Digital / analogue periphery via Phoenix Compact bus-concept
- Using the intelligence of UniPi
- Periphery via Modbus TCP
- Linux based

Our Product



SmartFactoryLink™
Factory of the future

What SMARTFACTORYLINK (TM) Offers



- Machine conditioning monitoring



- Real time notification



- Automatic data collections



- Visualize machine data in single dashboard



- Rules based monitoring



- Machine OEE

Benefits of SMARTFACTORYLINK (TM)



Low Cost of Entry



Improve reaction time



From conventional factory to a smart factory within hours



Improve data integrity



No more silo solutions



Provides production insights



Improve production cost



Get Connected, Get Smarter

SOPHIC established in 2007-Dec, with presence in Malaysia (KL & PG) & Vietnam, we've proven i4.0 solutions implemented in >50 MNCs & SMEs and across the industries i.e. semiconductor, medical, consumer electronics, automotive, solar and general industries. Our solutions span both data & process automation.

People is our company's greatest asset and we're very proud with our talented team (100% local). In terms of competencies, our strength is in software, mechanical & electrical design. We've internal experienced software development team which is competent in PLC & PC-based development (C#, C++, Python, Labview, PLC ladder & robotic control).

Our added strength lies in our proven Industry 4.0 solutions via turnkey service, we cover end to end from edge connectivity to analytics via our I4.0 Connected Assets Suite (ICAS). Data flows seamlessly from machine via our edge connectivity M2M (Machine to Machine) suite (supporting various industrial protocols' communication), to descriptive analytics dashboard, to mobile application and big data analytics. We sincerely believe our ICAS suite can help you to unlock further values from your production floor in near future towards i4.0 lights-off manufacturing implementation.

Our Offering and Solutions

Smart Factory



I4.0 Connected Assets Suite
(ICAS)

Smart Environment



Water Quality Monitoring



Smart City



Surveillance Video Analytics



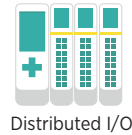
14.0 CONNECTED ASSETS SUITE (ICAS)

Our Services

What makes us different

We at Sophic Automation understand that a production line is like a choir. Although each machine has a different function, when brought together they form a harmonious melody.

We make sure everyone is **singing from the same page**.

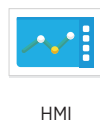


SOPHIC AUTOMATION'S TOFI BRIDGE

supports the following Protocols/Platforms:



with more being developed



No matter what machines and devices you have, we will make sure **everything** is **connected** to one easy to use framework

Our Software

Configurable Visualization Dashboard



Fully Configurable
the way **You** want it

For display of

- Activity time
- Heatmap
- Total number of online asset
- Historical trending of data
- Ticketing and Alarm system



Industry 4.0 Connected Asset Suite (ICAS)

Framework

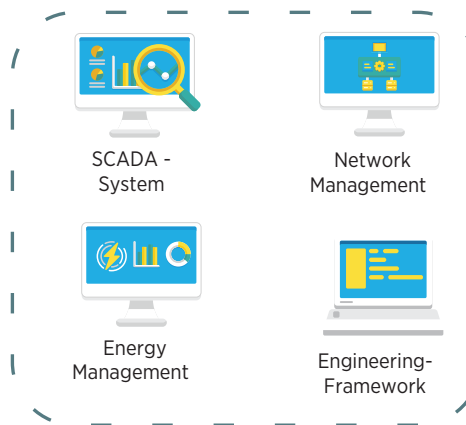
ENTERPRISE LEVEL

Manufacturing Execution System (MES)

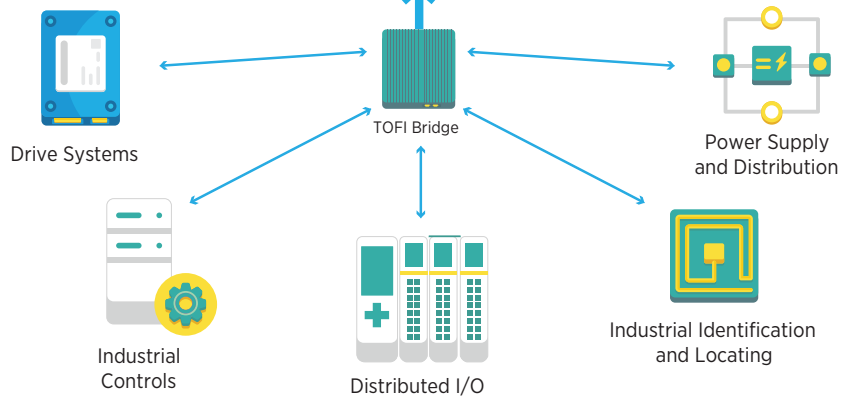
Enterprise Resource Planning (ERP)

FACTORY LEVEL

DASHBOARD



FIELD LEVEL



By implementing our CMMS solution, we'll bring you an 'Uber' concept and virtual production manager to improve your shopfloor maintenance system and resource management.

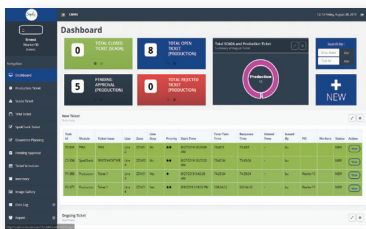
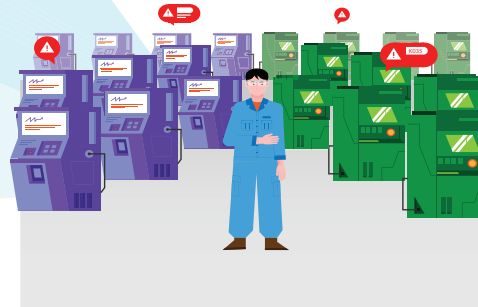
The Problem

Efficient Maintenance Management

Trying to keep track of your machines is tough, especially when there are many machines spread out over a large area.

The common problems faced are,

- 1 Not knowing when a machine goes down.
- 2 When a machine goes down, not having a quick response.
- 3 Not having a quick way to diagnose the issue at hand
- 4 Unable to track the proficiency of technicians



The Solution

Computerized Maintenance Management System

With our Computerized Maintenance Management System (CMMS), we will equip your technicians/operators with our CMMS app and Web App. Track Machine downtime, how fast technicians responded, what was the issue and time used to resolve, and has photo function for record keeping and approval.

Key Features

- Tracks downtime of individual machines
- Monitor proficiency and efficiency of technicians
- Immediate Notification of machine stoppage
- Take photos during maintenance for record keeping and approval
- Assign tasks to specified technician





INDUSTRIAL IOT SOLUTIONS

Description

Our IoT solutions enable SMART into manufacturing & industrial operations. Companies & Enterprises can gain real-time visibility and actionable insights for every sensors & devices, machines, production lines, and across multiple geographical areas remotely. Partnering with IBM, we offer a complete portfolio of big data and analytics solutions to fuel your cognitive business. Our solutions enable organizations to engage with data to answer the toughest business questions, uncover patterns, and pursue breakthrough ideas.

Middleware

• Our application-specific (Monitoring, Traceability, Actionable Dashboard, etc) Middlewares bridge between devices & enterprises software solutions to enable SMART into Manufacturing & Industrial applications.

- **SCADA**
(Supervisory Control And Data Acquisition)
- **Machine Monitoring System**
- **Production Monitoring System**
- **Actionable Dashboard**
- **Environmental Monitoring System**
- **Traceability solutions**



Analytics

• Once in the cloud or server, users can then use our cloud based application for live real time factory monitoring and intelligence analytics.

- Algorithms will be developed to provide advanced OEE, enabling manufacturers to view their voluminous streams of data in analytics format and obtain actionable information for productivity, safety and profitability enhancement.



Connect and Communicate

- Connect to & Acquire data from virtually any sensors & devices using our connectivity solution & TofITM Bridge Hardware.

Supportable Devices & Protocols :

PLC, MODBUS/ASCII & MODBUS/RTU, CAN, EtherNet/IP, BACnet, ADC (direct and via IIO), GPIO (including PWM), USB, Ethernet, WiFi (TCP/IP, UDP), ZigBee, XBee, Bluetooth, GPS.

- Communicate among the different streams of data and condition the data. for IoT ready

Supportable Interfaces :

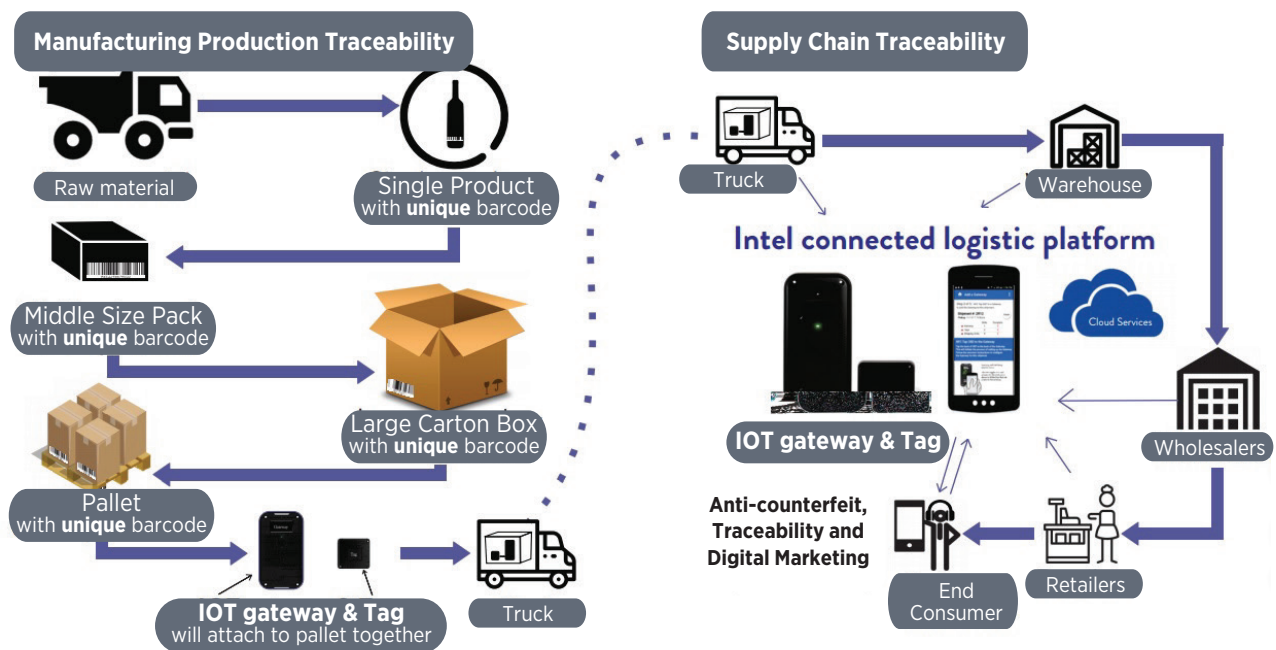
MQTT, HTTP/HTTPS/REST, Plain Text, JSON, XML, CSV, SNMP, FTP, SMS, SIP, USB, Ethernet, WiFi (TCP/IP, UDP), GSM



We Offer

Consultation, Technology, Implementation & Big data analytics Services.

Transparency, Connection and Trustworthy



Intel Connected Logistics Platform

Hardware devices with intel proprietary



Hardware Overview [Gateway]

- Smartphone Form
- Factor
- LCD
- Power LED
- Switch
- Shock Tilt
- Temperature
- Humidity
- Ambient Light
- Pressure Sensing
- Beeper
- 20 to 40 days Battery Life
- 3G Modem. GNSS Wi-Fi, Bluetooth, NFC, USB OTG Port Intel Atom X3 800 MHZ Quad Processor
- Android OS
- 802.15.4 Dense 300 Node Wireless Sensor Network
- Credit Card Form Factor
- 3- 6 Months Battery Life
- 802.15.4 Wireless Sensor Network Security Chip
- 32 bit Microcontroller




TOFi Solution Sdn Bhd

ToFi Bridge BR-002

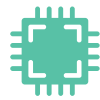
Universal Bus Translator (ToFiBridge) is a platform capable of adapt & translate all types of manufacturing data (from low level sensors to PLCs) into IoT Gateway ready & compatible data. This platform will smoothen modernization transition via compliance standards such as MQTT and IIC to ease for next level deployment for intelligent algorithm. Beyond ToFi Bridge, our Application Program Interfaces (APIs) will bridge two-way communication between – Middleware to Gateway and -Gateway to Cloud. The API acts as bridge transferring data from local PC to cloud system. API consists of functions such as pulling of data, inserting data from/to cloud, data mapping etc.

ITEM	CONTENT
Dimensions	150mm x 190mm x 29mm
Processor	Intel® BayTrail-D Processor Celeron J1900 2.0GHz, quad core
Chipset	Integrated
Display	Intel HD Graphics, 1x VGA, 1x HDMI (dual Display)
Memory	1x DDR3L SO-DIMM, max. 8GB
Storage	1x mSATA via mini PCIe 1x SATA
Expansion Slot	1x full high mini PCIe for mSATA SSD 1x mini PCIe for wifi/3G 1x sim slot
Audio	ALC662 Audio Codec
Rear Ports	1x Mic In 1x Line Out 1x DC in (12 or 19V) 1x HDMI 1x VGA 1x USB 3.0 5x USB 2.0 2x GigaLAN, 3LAN official 2x COM ports
Ethernet	1x RTL8111F Gigabit Ethernet, Wake on Lan supported 3x RT L811F Gigabit Lan (Optional)
Cooler	Fanless design
Case material	Aluminium alloy
OS supported	Win 7, Win 8/8.1, Win 10, Linux
Environment	Operating temp. : -20°C ~ 65°C
Weight	2 Kgs
Vesa	Support VESA mount Kit MIS-D75, 100
Other features	Support PXE, Wake ON Lan reliable Auto Power ON, Watch Dog
Optional Accessories	Mini PCIe WIFI or WIFI+BT Module Mini PCIe 3G or 4G Module Antenna VESA Mount Kit

Features



Palm-size form factor with expansion design.



Support various type of industrial PLC / Data Acquisition / Sensors / Devices protocols.



Built-in with WiFi AP system for remote application solutions.



Include with Web Portal for configuration and maintaining.



Comes with common use communication interfaces (USB, Serial, Ethernet, GPIO, Parallel), and API features support multi-vendor protocols such as (Modbus, PROFINET, EtherCat, MQTT).



Applications

- Manufacturing process monitoring
- Equipment integration
- Multi-vendor protocol integration
- SCADA System
- Big Data Application
- Production traceability system
- Data acquisition to cloud via MQTT protocol



TXMR Sdn Bhd

Introduction

TXMR SDN BHD is a company that providing a Total Solution for Industrial Design, Automation and Robotic System Solution. Established in Malaysia since 24th September 2010. Based in Subang Jaya, Selangor. We provide Total Solution for Industrial Automation System & Products.

TXMR SDN BHD start with customize solution for Robotic & Automation System and now TXMR focusing on producing standard product solution for Industrial Fabrication, Robotic System (Robot Welding, Fabrication, Assembly) and Material Handling Product (Smart T-Arm Manipulator, Automated System Retrieval Storage & Autonomous Mobile Intelligent Robot)

Vision

To be global trusted branding and focus in Human Sense Robotic Technology innovation for Robotic Component Manufacture and be the first Robotic Component Manufacturer from South East Asia.

Mission

To furnish Total Solution on Robotic Component Manufacture through intensive technology collaboration which incorporated with the latest Human Sense Robotic Technology Innovation together with outstanding quality in the timely manner in order to focus producing robotic product innovation for global robotic market.

Business Activities



**Automation &
Robotic
Programming**



**SMART Manufacturing
System**



Project Management



Training



**Fabrication &
Machinery
Process**



**Industrial Automation
Engineering Design**



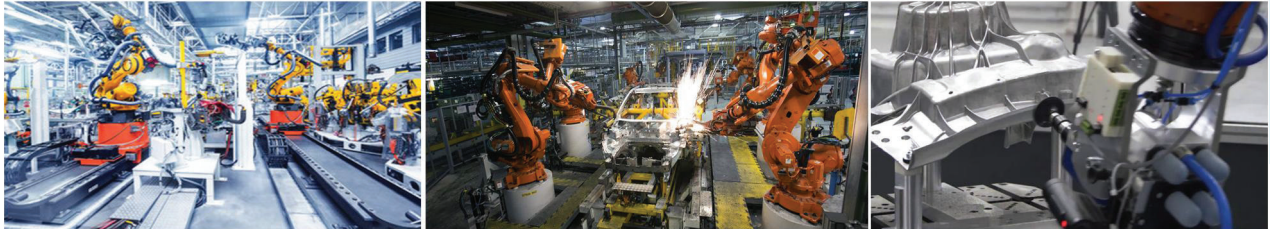
**Research &
Development**



**After Sales
Services**

Fabrication Process Robot (FPR)

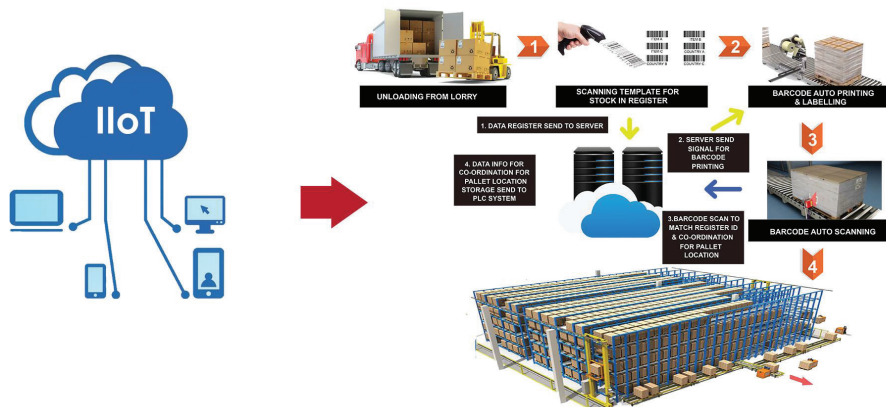
Solution from design, construction, installation & after sales services for robotic system integration which is benefiting for industrial process consistency and precision.



FPR mainly focus on welding, grinding, cutting and polishing process. Automotive, Aerospace, Marine, O & G, Furniture and General Industries.

Cyber-Physical Management System (CPMS)

System software to tracking & monitoring with flexible design to suit various process which is system are installed nearby the workstation on main assy and each sub assy. CPMS also solution for inventory & warehouse, assembly line, manufacturing line, production plan, parts, component , products, finish goods and quality.

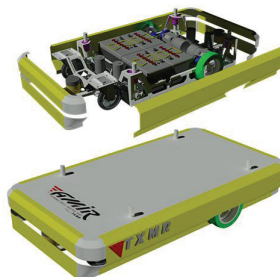


Material Handling & Equipment (MHE)

Industrial solution suit for all types industry such as assembly line, manufacturing, warehouse & inventory. MHE also independent equipment to assist material handling process which is can be integrated with one another.



**SMART
T-Arm Manipulator**
Alternative solution for
warehouse & inventory management
system.



Autonomous Guided Vehicle (AGV)
Industrial applicable to move materials around
manufacturing facilities or warehouse which is
follows markers on the floor.



**Autonomous Mobile
Intelligent Robot (AMiR)**
Intelligent robot to replace
danger, dirty and dull activities.



ViE Technologies Sdn Bhd

Background

ViE Technologies Sdn Bhd was founded in January 2007 and strives to produce **cost effective Electronics Communications Solutions (ECS)** to cater to the needs of the industry's top equipment maker.

ViE produces a wide variety of ECS products for machine automation mainly used in data communication and motion control. The products include high speed digital input and output PC interface cards, **high speed low cost** remote input and output controller PC interface cards and remote modules, **high speed high resolution** motion controller and driver boards, universal light source controller and digital signal multiplexing cards. ViE's ECS products are **100% backward compatible** and able to provide a low cost alternative to users who wish to switch to ViE's ECS Products.

Products



We specialize in designing Embedded Systems using System On Chip (SOC) Solutions with strong in-house capabilities covering firmware, circuit hardware, software design and support services.

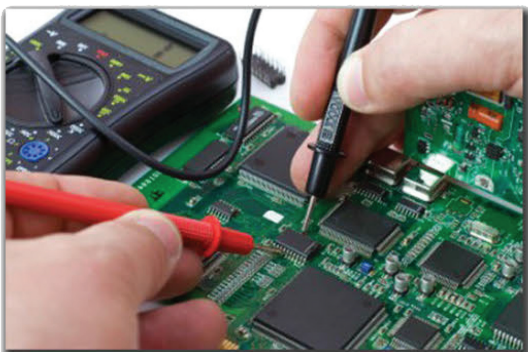
The **high performance and cost effectiveness** of ViE's Electronics Communications System (ECS) makes them a value addition to any electronics communications needs. These solutions are widely used in the **automation of electronics, automotive, telecommunications, pharmaceutical, and medical instrument industries.**

Achievement

ViE Technologies won the 1-Innocert Certification in Innovation Certification for Enterprise Rating and Transformation which was organized by SME Corporation Malaysia.



In-House R&D



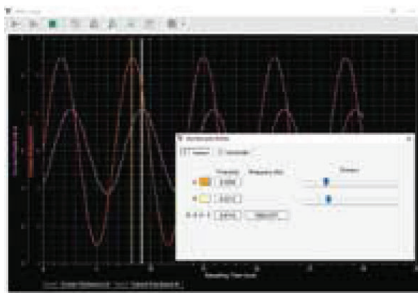
Our experienced R&D engineers engaged in innovating, refining and developing products and Customized Embedded Solutions based on customer's requirement. With our worldwide installed base, our technologies go beyond the boundary of various industries. By leveraging our strong engineering experiences and complete solutions, we aim to assist our customers to simplify their systems through cost-effective innovation.

ViMO Stepper Motor Driver Solutions

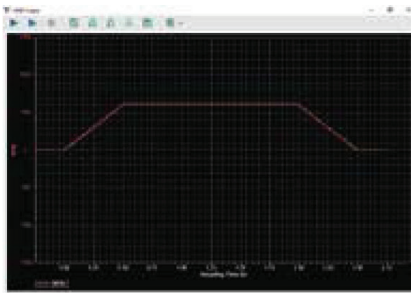


iM4401-00 Stepper Driver (ViMO series) is a high performance 1-axis Digital Signal Processor (DSP) based stepper driver intended to drive 2-phase and 4-phase hybrid stepper motors. Configuration software ViPRO-DRIVE is provided for users to monitor motion signals through motion oscilloscope (ViMO-Scope), customize idle scaling setting and fine-tune the motor parameters for different applications. In overall ViMO stepper driver is a cost-competitive, compact and flexible for vast variety of industrial motion applications.

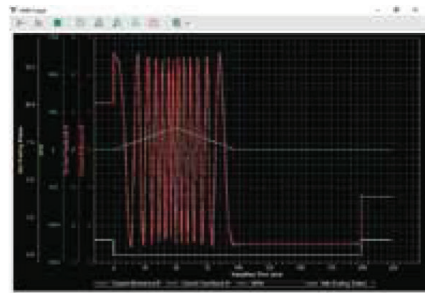
Motion Oscilloscope Preview



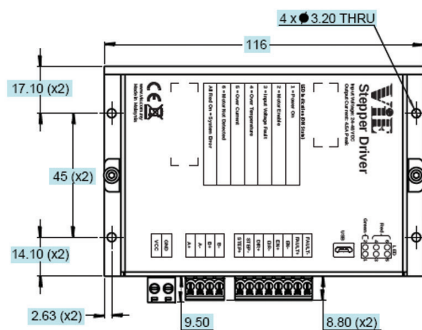
Flexible adjustable ideal scaling



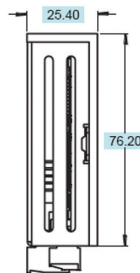
Capture external motion controller profile



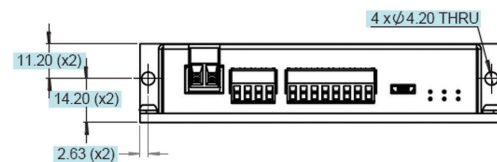
Advance timing motor analysis



Center View



Top View



Side View

PRODUCT DIMENSIONS

Specification

Model Type	iM4401-00
Power Input	24 to 48VDC
Support Axis	1 axis
Control Mode	Step & Direction (500 Kpps line drive)
Output Current	0.1A to 4.5A (Software Configurable)
Encoder Feedback	No
Step Resolution	200, 400, 800, 1000, 1600, 2000, 3200, 5000, 6400, 10000, 12800, 20000, 25000, 25600, 50000, 51200, 100000, 102400 (Software Configurable)
Microstep Smoothing	Available for all steps
Idle Current Reduction	0% to 100% (Software Configurable)
Configuration Method	USB 2.0
Dimensions (H x W x L)	43.0mm x 75.5mm x 118.0mm
Weight	400g
Ambient Temperature	0 to 55 °C
Status LEDs	Yes
Circuit Protection	• Thermal Shutdown Protection • Over/ Under Voltage Lock Out • Over Current Detection • Wrong Motor Detection
Anti-Resonance	Yes
Software Motor Tuning	Yes
Suitable Motors	4, 6, 8 lead wire motors
Motion Oscilloscope	• Capture external motion controller profile • Flexible adjustable ideal scaling • Advance timing motor analysis

Specifications are subject to change.

System Integrators Matrix

No	System Integrator	Design			Hardware Equipment									
		System	Consultation	Animation / Simulation	Retrofit	Fabrication	Sensor Installation	Wireless Communications	PLC / SCADA	Development Kit / Gateway	Automation	Vision	Robotic	Remote Monitoring Furniture
1	ADVANCED BINARY NETWORK SDN BHD				O		O	O	O	O	/		/	
2	BIZSMART TECHNOLOGY SDN BHD				O		O	O	O	O	O	/		
3	ELLIANCE SDN BHD				O	/	O	O	O		O		/	/
4	ETRONIX SDN BHD				/		/	/	O	O	/			O
5	HF TECHNOLOGY SDN BHD		/		/		/	O	O	O	O		/	O
6	IIO TECH SDN BHD	O	O	/			O	O	/	O	O		/	/
7	TEKSOFT (SEA) SDN BHD	O	O	O	/	/	/	/	/		/	/	/	
8	MAXTRAX ENGINEERING SDN BHD	/			O	/	O	O	O	O	O	/	/	
9	MEXCEL TECHNOLOGIES SDN BHD				O		O	O	O	/	O	/	/	
10	NCSB SYSTEMS SDN BHD				O		O	O	O	O	/	/	/	
11	ORIONPLEX SDN BHD		/				/	/	O			O		/
12	PACKAGING SALES & SERVICE (M) SDN.BHD	O			O	/	O	O	O	/	O		/	O
13	ROBOLAB TECHNOLOGY SDN BHD	/	O						O		O		O	
14	SOFT ROCK TECHNOLOGIES SDN BHD	/	O		/		/	/	O	/	/		/	/
15	SOPHIC AUTOMATION SDN BHD				O		O	O	O	O	/	/	/	
16	SUPREME SOFT (M) SDN BHD						O	O	O	/	/			
17	TOFI SOLUTION SDN BHD				O		O	O	O	O	/	/	/	
18	TXMR SDN BHD	O	/	/	O	/	O	O	O	/	O		/	/
19	VIE TECHNOLOGIES SDN BHD						/	/	/	/	/	O		O

Notes : Competencies Updated on : 1st January 2020

O = Full Competency

/ = Collaboration with business / technology partners

System Integrators Matrix (Cont'd)

No	System Integrator	Software Integration							Core Expertise										
		SECS / GEM	MES	ERP / SAP	OEE	AI (ML/DL)	Cyber Security	Custom Software Development	Agriculture	Food & Beverages (F&B)	Chemical, Oil & Gas	Electrical & Electronics	Mechanical & Metal	Automotive	Aerospace	Medical	Glove & Condom	Textile	Furniture
1	ADVANCED BINARY NETWORK SDN BHD	O	O		O			O				O	/						
2	BIZSMART TECHNOLOGY SDN BHD	/	/		O			O		/		O	/						
3	ELLIANCE SDN BHD	O	/	/					O			O							
4	ETRONIX SDN BHD	/	O		O	/		O		/		/	O						
5	HF TECHNOLOGY SDN BHD	/	O	/	O					O	O	O	O	/					
6	IIOTECH SDN BHD	/	/	/	O				O		/	/	O	/					
7	TEKSOFT (SEA) SDN BHD		/	O	O					/		/	O	O	O				
8	MAXTRAX ENGINEERING SDN BHD	/	/		O			O				O	O	/		/			
9	MEXCEL TECHNOLOGIES SDN BHD		/		O			O		/		O	/						
10	NCSB SYSTEMS SDN BHD	O	O		O			O				O					/		
11	ORIONPLEX SDN BHD		O		O			O				O	/						
12	PACKAGING SALES & SERVICE (M) SDN.BHD		O	/	O	/				O		O	O	/					
13	ROBOLAB TECHNOLOGY SDN BHD	/										/	O						
14	SOFT ROCK TECHNOLOGIES SDN BHD	/	O	/	O							O	O						
15	SOPHIC AUTOMATION SDN BHD	O	O		O			O				O					/		
16	SUPREME SOFT (M) SDN BHD	/	O		O			O			/	O	/						
17	TOFI SOLUTION SDN BHD	O	O		O			O				O					/		
18	TXMR SDN BHD		/	/							/	/	O	O					
19	VIE TECHNOLOGIES SDN BHD	/	O		O							O	O	/		/			

Notes : Competencies Updated on : 1st January 2020

O = Full Competency

/ = Collaboration with business / technology partners

SYSTEM INTEGRATORS LISTING

ADVANCED BINARY NETWORK SDN BHD

01-21-01, Suntech @ Penang Cybercity, Lintang Mayang Pasir 3, 11950 Bayan Baru, Penang, MALAYSIA

Person in charge: Mr. Afdzal Nazri

Mobile: +6019-521 2491

Website: <http://www.advbin.net>

BIZSMART TECHNOLOGY SDN BHD

SELANGOR : 33-2, Jalan Puteri 1/4, Bandar Puteri, 47100 Puchong, Selangor Darul Ehsan.

PENANG : 52A, Pusat Perniagaan Raja Uda, Jalan Raja Uda, 12300 Butterworth, Pulau Pinang.

Person in charge: Mr. Thirumaran Krishnan

Mobile: +6012-453 9171

Website: <http://www.bizsmartech.com>

ELLIANCE SDN BHD

31-13A-17, The CEO, Lebuhraya Nipah 5, 11950 Bayan Lepas, Pulau Pinang

Person in charge: Mr. Cheng Boon Seng

Mobile: +6012-481 6099

Website: <http://www.elliancesystem.com>

ETRONIX SDN BHD

No. 305, Industry Centre, UTM Technovation Park, Universiti Teknologi Malaysia, 81300 Skudai, Johor Darul Takzim, Malaysia

Person in charge: Mr. Alex Eng

Mobile: +6012-716 3358

Website: <http://www.etrnix.asia>

HF TECHNOLOGY SDN BHD

KUALA LUMPUR

2F-3, 2nd Floor, Tower 1 @ PFCC, Jalan Puteri 1/2, Bandar Puteri, 47100 Puchong, Selangor, Malaysia.

Person in charge: Mr. Francis Chia

Mobile: +6016-276 9398

Website: <http://www.hftech.biz>

PENANG

No. 48, 1st Floor, Persiaran Mahsuri 2, Sunway Tunas, 11900, Malaysia.

+6-04-643 6650

VIETNAM

5th Floor, Sentinel Place Building, 41A, Ly Thai To Street, Hoan Kiem District, Hanoi, Vietnam

+84976021111

Mr. Francis Chia/Le Van Hieu
(Vietnam Mobile No. : +09 6636 5552)

sales@hftech.biz / hieu.lv@hftech.biz

SINGAPORE

66, Tannery Lane #01-03D, Sindo Building, Singapore 347805.

+65 6844 1310

IIOTECH SDN BHD

SUITE 18-07, Avenue Crest, No 2A, Jalan Jubli Perak 22/1, Seksyen 22, 40300 Shah Alam, Selangor, Malaysia.

Person in charge: Mr. Izzuddin Ishak

Mobile: +6019-382 7782

Website: <http://www.iitech.com.my>

SYSTEM INTEGRATORS LISTING

TEKSOFT (SEA) SDN BHD

HEADQUARTERS

30A, Jln PJS 1/46, Tmn Petaling Utama, 46000 PJ, Selangor, Malaysia.

Person in charge: Mr. Yew Kian Seng
Mobile: +6012-205 6996
Website: <http://www.teksoft.com.my>

REPRESENTATIVE OFFICE

C-3A-3A Oasis Square, No 2 Jln PJU 1A/7A, Ara Damansara, 47301 PJ, Selangor, Malaysia.

+603-7734 2881

PENANG

68 Jalan Perai Jaya 4, Bandar Perai Jaya, 13700 Pulau Pinang, Malaysia.

+604-399 5571

JOHOR

25-01 Jln Bestari 8/2, Tmn Nusa Bestari, 79150 Iskandar Puteri, Johor, Malaysia.

+607-238 7978

MAXTRAX ENGINEERING SDN BHD

31-13A-13 The CEO, Lebuhr Nipah 5, Kampung Seberang Paya, 11900 Bayan Lepas, Penang, Malaysia.

Person in charge: Mr. Lim Wei Keong
Mobile: +6012-479 5988
Website: <http://www.maxtrax.com.my>

MEXCEL TECHNOLOGIES SDN BHD

6, Lorong Perindustrian Bukit Minyak 1/1, Taman Perindustrian Bukit Minyak, 14100 Simpang Ampat, Penang, Malaysia.

Person in charge: Mr. Chong Chee Keong
Mobile: +6012-420 7000
Website: <http://www.maxtrax.com.my>

NSCB SYSTEMS SDN BHD

2-3-27, Harbour Trade Centre, Gat Lebuhr Macallum, 10300 Penang, Malaysia.

Person in charge: Mr. Vincent Heng
Mobile: +6016-447 9855
Website: <http://www.nscb.com.my>

ORIONPLEX SDN BHD

51B Lintang Sungai Pinang, Jelutong, 11600 Penang.

Person in charge: Mr. Gary Lee
Mobile: +6019-410 6712
Website: <http://www.orionplex.com.my>

PACKAGING SALES & SERVICE (M) SDN.BHD

3, Jalan TPP 12, Taman Perindustrian Putra, 47130, Puchong, Selangor, Malaysia.

Person in charge: Mr. Mano Subramaniam
Mobile: +6012-203 6308
Website: <http://www.pss.com.my>

ROBOLAB TECHNOLOGY SDN BHD

Lot3210-E-1, Kawasan Perindustrian Kampung Balakong, Jalan Balakong, 43300 Seri Kembangan, Selangor, Malaysia

Person in charge: Ir. Dr. Tan Chee-Fai
Mobile: +6019-381 0189
Website: <http://www.robolab.com.my>

SOFT ROCK TECHNOLOGIES SDN BHD

1A-2-1 @ One Precinct, Lengkok Mayang Pasir 11950 Bayan Baru, Penang, Malaysia.

Person in charge: Mr. Lan Weng Keong
Mobile: +6012-384 2439
Website: <http://www.sorotech-my.com>

SYSTEM INTEGRATORS LISTING

SOPHIC AUTOMATION SDN BHD

PENANG HEADQUARTERS

PSDC Building, 2nd Floor, No.1, Jalan Sultan Azlan Shah, 11900 Bayan Lepas, Penang, Malaysia.

Person in charge: Mr. Koh Dim Kuan

Mobile: +6016-559 6485

Website: <http://www.sophicautomation.com>

KUALA LUMPUR

Lot 2-9, Innovation House, Technology Park Malaysia, Lebuhraya Puchong-Sg Besi, 57000 Kuala Lumpur, Malaysia

Tel : (603) 899 41179

VIETNAM

Sophic Co Ltd, Lot A2, Nguyen Van Ba street, Truong Tho Ward, Thu Duc District, Ho Chi Minh City, Vietnam.

Tel : (+84) 8 62821235

SUPREME SOFT (M) SDN BHD

No.P3-03A, Shaftsbury Square, Persiaran Multimedia, 63000 Cyberjaya, Selangor, Malaysia

Person in charge: Mr. Jeffrey Foo

Mobile: +6012-379 8249

Website: <http://www.supremesoft.com.my>

TOFI SOLUTION SDN BHD

PSDC Building, 2nd Floor, No.1, Jalan Sultan Azlan Shah, 11900 Bayan Lepas, Penang, Malaysia

a. Person in charge: Mr. Law Chen Long

b. Mobile: +6012-472 5585

c. Website:

TXMR SDN BHD

No.1, Jalan TS 6/10, Taman Industri Subang 47610, Subang Jaya, Selangor, Malaysia.

Person in charge: Tengku Mohd Farid Tengku Hassim

Mobile: +6013-991 1618

Website: <http://www.txmr.my>

VIE TECHNOLOGIES SDN BHD

746, Persiaran Cassia Selatan 3, Batu Kawan Industrial Park, 14110 Bandar Cassia, Penang, Malaysia.

Person in charge: Mr. Avren Ch'ng Pey Joon

Mobile: +6012-553 9853

Website: <http://www.vie.com.my>



NOTES

NOTES



MALAYSIA PRODUCTIVITY CORPORATION

Lorong Produktiviti, Jalan Sultan
46200 Petaling Jaya, Selangor

Tel : 603 – 7955 7266
Fax : 603 – 7957 8068
Email : marketing@mpc.gov.my
Website : www.wayup.my

Driving Productivity of The Nation